

2020



UNSW Global

Pathways to UNSW Sydney

Diploma Programs
Foundation Studies Programs
English Language Courses

**START YOUR
GLOBAL
EXPERIENCE**



Apply using our online application form:
apply.unswglobal.unsw.edu.au
or use the form enclosed.

This Student Guide provides information for students intending to further their studies at university level. Students should read this guide in conjunction with the UNSW International Undergraduate and Postgraduate Student Guides, which provide more detailed information on UNSW Sydney facilities as well as undergraduate and postgraduate programs and tuition fees.

The UNSW Undergraduate and Postgraduate Student Guides can be found online at international.unsw.edu.au

SCHOLARSHIPS

At UNSW Global, we reward academic excellence.

UNSW Global offers scholarships of up to AUD\$10,000 to high-achieving international students, to contribute to their UNSW Foundation Studies Program or UNSW Diploma Program.

Established in honour of the late Ross Woodham, founding Director of UNSW Foundation Studies Programs, Ross Woodham Scholarships are open to international and local students progressing from UNSW Foundation Studies to their degree at UNSW Sydney.

We encourage the extraordinary

UNSW Foundation Studies students also receive course prizes in recognition of their excellence, and on occasion, UNSW will offer additional scholarships for extraordinary achievement or potential.

We're here to help you start your global journey in every way we can.

For more information visit
unswglobal.unsw.edu.au/education/scholarships

The information contained in the guide is correct as at March 2019. UNSW Global reserves the right to alter any program or admission requirement without prior notice. UNSW Global Pty Limited is a not-for-profit provider of education, assessment and training services and a wholly owned enterprise of UNSW Sydney (The University of New South Wales). English Language Courses are delivered by UNSW Global Pty Limited under its CRICOS Provider Code: 01020K. UNSW Foundation Studies Programs and UNSW Diploma Programs are delivered by UNSW Global Pty Limited under UNSW Sydney's Provider Code: 00098G UNSW Global ABN 62 086 418 582. See UNSW Global CRICOS Course Codes at unswglobal.unsw.edu.au/about/esos

UNSW GLOBAL

Your global experience starts here. UNSW Global has university pathway programs that provide a seamless transition to UNSW Sydney so you can achieve your academic and career goals. We'll provide you with the academic and English language foundations for success, as well as practical experience and personal support, so that you can make the most of your studies at UNSW.

UNSW Global offers three unique, market-leading university pathway options:

DIPLOMA PROGRAMS

With a UNSW Diploma, you'll be fast-tracked to the Second Year of a UNSW degree program and on successful completion you will receive two qualifications: a Diploma and a Degree.

FOUNDATION STUDIES PROGRAMS

With over 30,000 successful graduates, UNSW Foundation Studies is the first and leading program of its type in Australia. With over 30 years experience preparing international students for a university degree, UNSW Global is your pathway to success.

ENGLISH LANGUAGE COURSES

English courses for Diploma Programs, Foundation Studies Programs and programs for entry to Bachelor and Master degrees, to prepare you for academic excellence and to help you get a head start on your global career.





VICE-CHANCELLOR'S WELCOME

I am delighted that you are interested in studying at UNSW Sydney, Australia's global university. UNSW Sydney attracts outstanding students from around the world and provides an atmosphere which inspires students to excel – first-rate teaching, world-class facilities, and a prime location in one of the most exciting cities in the world.

Today, UNSW Sydney is home to 20,000 international students from more than 120 different countries. Our international students are at the heart of our community, adding a wonderful, vibrant dimension to the education experience for all on campus.

As one of Australia's leading research and teaching universities, we offer a broad range of high-quality degree programs. We also have a suite of additional programs tailored specifically to international students.

UNSW Sydney is home to Australia's oldest university-operated language centre, which has helped overseas students improve their English skills for more than 50 years.

Our Foundation Studies program is also celebrating its 30th anniversary this year, making it Australia's oldest pre-university program.

Our English language courses, Foundation Studies programs and new Diplomas in Science and Engineering have all been designed to ensure that you are supported to get the most out of your UNSW Sydney experience.

We consider these programs vital to helping you meet the challenging academic entry standards of UNSW Sydney, and develop the study, language and cultural skills needed to succeed at university in Australia.

By choosing UNSW Sydney, you are joining a university ranked in the Top 50 in the world. Not only do we perform well in international student satisfaction, we also lead in innovation, teaching and research excellence, and in forming strong industry partnerships.

On behalf of the UNSW Sydney community, I thank you for your interest and hope to welcome you in the near future, as you take your place at Australia's global university.

A handwritten signature in black ink that reads "Ian Jacobs". The signature is written in a cursive style.

Professor Ian Jacobs
President and Vice-Chancellor
UNSW Sydney

04

OUR CAMPUS, OUR CITY

- 04 Modern campus
- 06 Why we are different
- 07 Gain a global education with UNSW
- 08 World-class university faculties and facilities
- 09 Your quality campus
- 10 Welcome to Sydney
- 12 Experience living and working in Sydney
- 14 Additional learning support programs
- 15 Student profile
- 16 Academic calendar

26

FOUNDATION STUDIES PROGRAMS

- 27 Your pathways
- 27 Why study a Foundation Studies Program?
- 28 Our programs
- 29 Our teachers
- 30 Study streams
- 31 Program dates and fees
- 32 Academic entry requirements
- 33 Citizens and residents
- 33 English requirements
- 34 UNSW undergraduate entry requirements

46

ABOUT UNSW AND HOW TO APPLY

- 46 Experience student life at UNSW Global
- 48 Students under 18 years of age
- 49 Under 18 student care program
- 50 More accommodation choices than ever
- 54 How to apply
- 55 Application form
- 57 Getting to know your way around Sydney



Our interactive guide will take you where you need to go with just a simple click.

↑ Click this icon to return here.

18

DIPLOMA PROGRAMS

- 19 Your pathways
- 19 Why study a UNSW Diploma?
- 20 Diploma in Engineering
- 21 Program dates and fees
- 22 Diploma in Science
- 23 Teacher profile
- 24 Academic entry requirements
- 25 English requirements
- 25 UNSW undergraduate entry requirements

38

ENGLISH LANGUAGE COURSES

- 39 Why Study an English Language Course?
- 39 Which English Language Course is for me?
- 40 Foundation English Entry Course (FEEC)
- 42 University English Entry Course (UEEC)
- 44 Tertiary Orientation Program (TOP)
- 44 Essential English (EE)
- 44 Career English (CE)
- 44 Essential Academic English (EAE)
- 44 Other additional fees
- 45 Study Tours and Customised Programs

AN IDEAL LOCATION

MODERN CAMPUS



SYDNEY CBD

20 minutes by bus



UNSW ART & DESIGN

10 minutes by bus



UNSW
SYDNEY



UNSW GLOBAL KENSINGTON

Foundation Studies Programs
Diploma Programs
English Language Courses



INTERNATIONAL AIRPORT TERMINAL

20 minutes by car





UNSW GLOBAL RANDWICK
English Language Courses

BONDI
6.8km



COOGEE
3.2km



WHY WE ARE DIFFERENT



45th

In the world.

QS World University Rankings, 2019



26th

In the world for employer reputation.

QS Global World Rankings, 2019



37th

In the world for academic reputation.

QS World University Rankings, 2019



90%

International student satisfaction.

International Student Barometer / ISB, 2017



21/50

Offering 21 of the world's top 50 subjects.

QS Global World Rankings, 2019



5 stars

First university in the world to be awarded the maximum QS Five Star Plus rating. We continue to hold this rating in 2019.

QS World University Rankings, 2019



Top earner

UNSW boasts a larger number of millionaire alumni than any other university in Australia.

Spear's WealthInsight, 2016



Leading innovation

UNSW is the #1 attended institution for Australian startup founders.

Startup Muster, 2017



Most employable

UNSW graduates are the most employable students in Australia.

Top 100 Graduate Employers Award, GradConnection, 2018.



Highest research funding

UNSW received \$550 million in research income and were #1 in ARC Linkage Industry grants in Australia in 2017.

Australian Research Council, 2017



Leaders in education

UNSW is a founding member of the prestigious Group of Eight (Go8), and the PLuS Alliance, and we are a member of the Association of Pacific Rim Universities (APRU) and Universitas21. We were also the only Australian university invited to join the Global Alliance of Technological Universities.



GAIN A GLOBAL EDUCATION WITH UNSW

At UNSW Global, we're dedicated to helping you achieve success in your studies and career. We provide the highest quality educational programs, combined with individual care and support, to ensure you have the very best experience at UNSW.

When you study at UNSW Global, you become part of the UNSW Sydney community as your programs are delivered on campus with access to UNSW sporting and social clubs and world leading teaching and research facilities. UNSW Sydney was Australia's first international university, and we are globally respected for our academic excellence, innovative teaching and cutting-edge research. We occupy a premier position in the Asia-Pacific region, ideal for shaping the next generation of global leaders for career success.



Your journey from Outstanding Student to Global Leader

Our remarkable students of today are the leaders of tomorrow.

UNSW Sydney attracts the very best students from around the world. We have one of Australia's most diverse student populations, welcoming over 20,000 international students from more than 120 countries. This diversity makes for a vibrant, cosmopolitan student experience. As a UNSW student, international perspectives are fused into your education as we prepare you for a truly global career.

Our 300,000 alumni are found across more than 146 countries. They are leaders in commerce, government, industry, and academia. Some of our most prominent alumni include the Judge of the High Court of Hong Kong, His Honour Justice Barnabas Fung; Chairman and CEO of Boustead Singapore Limited, Fong Fui Wong; Founder of ResMed, Dr Peter Farrell AM; co-founders and co-CEOs of Atlassian, Mike Cannon-Brookes and Scott Farquhar; award-winning animator, Philip To; and co-founder of the Octopus Group, Elaine Teh.

At UNSW Sydney, you will make connections with an international alumni network of innovators and influencers spanning Australia, China, Hong Kong, Malaysia, Singapore, Indonesia, Thailand, Vietnam, the United Kingdom, United States and many other countries.

WORLD-CLASS UNIVERSITY FACULTIES AND FACILITIES

ACADEMIC EXCELLENCE, OUTSTANDING EXPERIENCE.



Art & Design

UNSW Art & Design is ranked among the top 50 globally, it leads with a focus on media innovation and emerging technologies.¹



Arts & Social Sciences

UNSW's Arts and Social Sciences faculty will allow you to explore big ideas, create new knowledge and tackle critical social issues.

UNSW Sydney is ranked 30th in the world for Social Sciences & Management.¹



Built Environment

UNSW's Built Environment faculty develops global leaders in architecture, planning and construction.

UNSW Sydney is ranked 25th in the world for Built Environment.¹



Business School

UNSW Business School is Australia's leading business school. It is ranked 15th in the world for Accounting & Finance.¹ The Financial Times ranked the MBAX at AGSM, part of the UNSW Business School 8th best in the world, and is the only online MBA by an Australian university to feature in the list.²



Engineering

UNSW Sydney is 1st in Australia for Engineering.

By subject, UNSW Sydney is ranked 6th in the world for Mineral & Mining Engineering and 12th in the world for Civil and Structural Engineering.¹



Law

UNSW Law is Australia's leader in progressive and rigorous legal education and research and is ranked 14th in the world.¹



Medicine

UNSW Medicine is building the future of healthcare ranked in the top 100 globally for medical faculties.¹



Science

UNSW is a powerhouse for scientific learning and research. Each year the brightest students learn from award-winning academics, access cutting-edge facilities and connect with industry leaders.



UNSW Canberra at ADFA

UNSW Canberra has provided high-quality undergraduate and postgraduate education to the Australian Defence Force at ADFA since the Academy opened in 1986.

¹ QS Global World Rankings by Subject 2019

² Financial Times Online MBA Ranking 2018; QS Global 250 Business Schools 2018 Report

YOUR QUALITY CAMPUS

Experience studying on the UNSW Sydney campus and enjoy world-class facilities and a dynamic and diverse university community.

- | | |
|-------------------------|---|
| On-campus accommodation | The Nucleus Student Hub |
| Cafés and restaurants | UNSW Fitness and Aquatic Centre |
| Supermarket | Tennis courts and sporting fields |
| Banks and ATMs | Health and lifestyle services including a medical clinic, optometrist, dentist, doctor, and physiotherapist |
| Libraries | |
| Post office | |
| Religious Centre | |



Going global with UNSW Alumni Michelle Widjaja

What do you currently do?

I'm an entrepreneur and I run a few businesses, including a chain of Japanese dessert cafés back in Jakarta called Shirokuma.

What is the one thing you love about your job?

I love creating new things for people to enjoy. Shirokuma is well known for its instagrammable desserts and unique collaborations with brands such as Sanrio (the official home of Hello Kitty and friends). It's so rewarding to see the happy smiles on my customers' faces when their food gets delivered to them.

What degree did you do at UNSW?

Bachelor of Commerce majoring in Marketing and Finance.

Why did you choose to study at UNSW Sydney?

UNSW seemed like the obvious choice because I had heard about how awesome the Business School is. It's even more amazing now that there are so many opportunities for students to explore entrepreneurship with the facilities such as the new Makerspace which encourages collaboration and innovation across disciplines.

How has your degree from UNSW Sydney helped you get to where you are now?

Apart from the academic side of things, UNSW offers many other avenues to explore different interests and skills. Through Arc, I started up and became president of the UNSW Cyber Gaming Society. This gave me a chance to try my hand at being a leader in this community and build negotiation skills by striking up promotional deals with local internet cafes.

WELCOME TO SYDNEY

You'll love studying in this beautiful, diverse and cosmopolitan city.



SYDNEY FACTS



POPULATION
4.9 million



AVERAGE TEMPERATURE
15°C – 27°C

BONDI BEACH



DARLING HARBOUR*





DISTANCE FROM UNSW



BONDI BEACH
7km



SYDNEY CENTRE
7km



SYDNEY AIRPORT
6km



CENTENNIAL PARK
3km

CHINESE NEW YEAR*



NEW YEAR'S EVE

EXPERIENCE LIVING AND WORKING IN SYDNEY

A TRULY GLOBAL CITY

In Sydney, you will enjoy a rewarding experience. A diverse and cosmopolitan society, Sydney was ranked **2nd in the world for most popular city for students** by **student.com** in 2018 and was voted the **10th-best city in the world to live in and work**.

(Mercer Quality of Living Survey, 2018)



Financial hub

Sydney is the business capital of Australia. It is home to more global firms than any other city in the country, and is a primary gateway to the Asia-Pacific economies, offering excellent opportunities for you to gain practical experience.



Climate

The city's warm and sunny climate is perfect for a healthy outdoor lifestyle. January and December are the hottest months and winters are generally mild, so you can enjoy the outdoors throughout the year. Swim year-round or learn to surf at the many beaches around Sydney and New South Wales, enjoy walking and cycling around the many walking tracks and cycleways, or join a sports team to meet new friends.

SYDNEY SEASONS:

Summer	December – February
Autumn	March – May
Winter	June – August
Spring	September – November



Travel hub

Sydney is an ideal base to explore the rest of Australia – it's easy to hop on a train to the Blue Mountains or fly to Melbourne, the Gold Coast and beyond. And with more international flights going in and out of Sydney airport, you'll have easy access to the rest of the world.



Getting around

UNSW Sydney is located in the leafy Eastern Suburbs, minutes away from popular attractions such as Coogee Beach and Centennial Park. The easiest way to get to and from the campus is by public transport using Sydney's modern buses and trains, or you can simply walk, with many attractions within walking distance. You can also enjoy the experience of travelling around Sydney by ferry or tram. And from 2020, the CBD and South East Light Rail will provide new convenience to UNSW students, providing quick access to the city and surrounds.



Food and shopping

Sydney is famous for the diversity of its food scene and café culture. With thousands of markets, restaurants, cafés and bars, the range of cuisine and fresh food is outstanding. From enjoying the many international dining options in Chinatown, to relaxing in beachside cafés in Manly and Bondi, to exploring Hyde Park's annual night markets, you'll find endless ways to satisfy your appetite. For fashion-lovers, Sydney also boasts excellent shopping, from high-end luxury to high street options. Shop in Sydney's CBD, visit one of the world-class shopping malls in Chatswood, Miranda or Bondi Junction, or even discover up-and-coming fashion designers at Paddington Markets.



Working in Australia

International students have the same employment rights as all workers in Australia. The Fair Work Ombudsman is a government agency that can provide free help to international students working in Australia.

For more information visit fairwork.gov.au or call 13 13 94

ADDITIONAL LEARNING SUPPORT PROGRAMS

A SUPPORTED LEARNING EXPERIENCE

At UNSW Global, in addition to your regular classes, you can access a range of **free learning support services** including consultations, workshops, a Learning Support Unit, a Study Club, a Conversation Club and also online resources. These support services are specially designed to help you achieve your learning and performance goals.

“ UNSW Global has really helped me to broaden my skill set making me feel much more confident and engaged. It's also allowed me to make friends with different people from a wide variety of cultural backgrounds. ”

BOWEN, CHINA
Foundation Studies Standard Plus
Commerce



UNSW GLOBAL SUPPORTS YOUR SUCCESS

You have access to **five** free learning support options outside of class time.



Weekly consultations

Receive specialist one-on-one extra tutoring sessions, where experienced teachers are available every week to answer your questions.



Specialist workshops

Join small group teaching sessions that are designed to help you master more challenging knowledge and skills.



Learning support unit

In addition to the UNSW's world class library, you'll have access to a library of learning resources, assistance for independent learning as well as support from Peer Leaders and classmates in an after hours Study Club.



Conversation club

Enjoy a fun way to meet new friends and improve your conversation skills, which are critical for your success at university.



Online resources

You'll have 24/7 access to learning resources including sample assessments and learning activities. Access via the campus Wi-Fi or at home.

STUDENT PROFILE

MARCHIA DEVANA
INDONESIA

FOUNDATION STUDIES
STANDARD PLUS
Commerce Stream

UNSW DEGREE
Bachelor of Commerce
and Information Systems



Why UNSW?

The main game changer that differentiated UNSW from any other university is its prestigious Business School and great learning programs focused on real-world problems that value critical thinking and seasoned lecturers that can bring both experience and passion into teaching.

The UNSW Business School also offers strong industry connections, continuously updating course materials to ensure that graduates will have the highest chances of success at their future work place. A vast alumni network allows current students to make career impacting connections.

Other than the Business School, I love the atmosphere at UNSW. With the diversity at UNSW, I am able to experience many cultures through the many people I meet every day. Student life is vibrant, with over 200 active societies to cater to any interest.

I also love how UNSW values innovation. A great example is the Michael Crouch Innovation Centre (MCIC) which students can use as a space to create start-ups and build prototypes using 3D printers that are available for anyone to use. UNSW also hosts the annual Peter Farrell cup, a competition centred on innovative ideas and industry mentorship to help students bring their idea into a reality.

What are you currently doing? (career wise)

I am currently interning at Deloitte over the summer break as a consultant in their Finance Transformation stream which focuses on the integration of future technology and the evolving role of finance in organisations.

When university is in session, I help UNSW Global Customised programs by maximising client experience and wellbeing during the programs.

I am also a UNSW student ambassador.

How has completing Foundation Studies helped you get to where you are now?

By going through Foundation Studies, I was able to smoothly transition into university. The teaching style helped me develop independence, a critical skill, whilst at the same time ensuring that I had understood the content. Another crucial aspect was all the soft skills I learnt, such as presenting and how to work in teams which I would end up doing for the majority of my university career. Together this allowed me to attain a high distinction and receive the Dean's Academic reward for excellence in my first year at university.

ACADEMIC CALENDAR

	2019												2020												2021											
	JUNE	JULY	AUGUST	SEPTEMBER	OCTOBER	NOVEMBER	DECEMBER	JANUARY	FEBRUARY	MARCH	APRIL	MAY	JUNE	JULY	AUGUST	SEPTEMBER	OCTOBER	NOVEMBER	DECEMBER	JANUARY	FEBRUARY	MARCH	APRIL	MAY	JUNE											
University English Entry Course	<p>For UNSW Term 1 2020 (17 Feb – 16 May 2020) 20 wks 5 Aug 2019 – 20 Dec 2019 15 wks 9 Sep 2019 – 20 Dec 2019 10 wks 14 Oct 2019 – 20 Dec 2019</p> <p>For UNSW Term 3 2020 (14 Sep – 12 Dec 2020) 20 wks 16 Mar 2020 – 31 Jul 2020 15 wks 20 Apr 2020 – 31 Jul 2020 10 wks 25 May 2020 – 31 Jul 2020</p> <p>For UNSW Term 2 2020 (1 Jun – 29 Aug 2020) 20 wks 18 Nov 2019 – 17 Apr 2020 15 wks 6 Jan 2020 – 17 Apr 2020 10 wks 10 Feb 2020 – 17 Apr 2020</p> <p>For UNSW Term 1 2021 (15 Feb – 15 May 2021) 20 wks 3 Aug 2020 – 18 Dec 2020 15 wks 7 Sep 2020 – 18 Dec 2020 10 wks 12 Oct 2020 – 18 Dec 2020</p> <p>For UNSW Term 2 2020 (1 Jun – 29 Aug 2020) 20 wks 6 Jan 2020 – 22 May 2020 15 wks 10 Feb 2020 – 22 May 2020 10 wks 16 Mar 2020 – 22 May 2020</p> <p>For UNSW Term 1 2021 (15 Feb – 15 May 2021) 20 wks 7 Sep 2020 – 5 Feb 2021 15 wks 12 Oct 2020 – 5 Feb 2021 10 wks 16 Nov 2020 – 5 Feb 2021</p>																																			
Diploma Program	<p>Optional English ▶ 15 wks 27 May – 6 Sep 2019 10 wks 1 Jul – 6 Sep 2019</p> <p>Diploma 9 Sep 2019 – 21 Aug 2020</p> <p>Optional English 20 wks 5 Aug – 20 Dec 2019 15 wks 9 Sep – 20 Dec 2019 10 wks 14 Oct – 20 Dec 2019</p> <p>Diploma 20 Jan – 11 Dec 2020</p> <p>Optional English 20 wks 18 Nov 2019 – 17 Apr 2020 15 wks 6 Jan 2020 – 17 Apr 2020 10 wks 10 Feb 2020 – 17 Apr 2020</p> <p>Diploma 11 May 2020 – 30 Apr 2021</p> <p>Optional English 20 wks 16 Mar – 31 Jul 2020 15 wks 20 Apr – 31 Jul 2020 10 wks 25 May – 31 Jul 2020</p> <p>Diploma 31 Aug 2020 – 20 Aug 2021 ▶</p> <p>Optional English 20 wks 3 Aug – 18 Dec 2020 15 wks 7 Sep – 18 Dec 2020 10 wks 12 Oct – 18 Dec 2020</p> <p>Diploma 18 Jan – 10 Dec 2021 ▶</p>																																			
Transition Program	<p>Optional English ▶ 10 wks 27 May – 2 Aug 19</p> <p>Transition 21 Aug – 13 Dec 2019</p> <p>Transition 23 Sep 2019 – 17 Jan 2020</p> <p>Optional English 20 wks 16 Mar – 31 Jul 2020 15 wks 20 Apr – 31 Jul 2020 10 wks 25 May – 31 Jul 2020</p> <p>Transition 24 Aug – 11 Dec 2020</p> <p>Optional English 20 wks 5 Aug – 20 Dec 2019 15 wks 9 Sep – 20 Dec 2019 10 wks 14 Oct – 20 Dec 2019</p> <p>Transition 6 Jan – 24 Apr 2020</p> <p>Optional English 20 wks 3 Aug – 18 Dec 2020 15 wks 7 Sep – 18 Dec 2020 10 wks 12 Oct – 18 Dec 2020</p> <p>Transition 4 Jan – 23 Apr 2021</p> <p>Optional English 20 wks 14 Oct 2019 – 13 Mar 2020 15 wks 18 Nov 2019 – 13 Mar 2020 10 wks 6 Jan 2020 – 13 Mar 2020</p> <p>Transition 30 Mar – 24 Jul 2020</p> <p>Optional English 20 wks 12 Oct 2020 – 12 Mar 2021 15 wks 16 Nov 2020 – 12 Mar 2021 10 wks 4 Jan 2021 – 12 Mar 2021</p> <p>Transition 29 Mar – 23 Jul 2021 ▶</p> <p>Optional English 20 wks 15 Mar – 30 Jul ▶ 15 wks 19 Apr – 30 Jul ▶ 10 wks 24 May – 30 Jul ▶</p>																																			
	UNSW TERM 2 BEGINS												UNSW TERM 3 BEGINS												UNSW TERM 1 BEGINS											
	UNSW TERM 3 BEGINS												UNSW TERM 2 BEGINS												UNSW TERM 1 BEGINS											



UNSW Sydney has implemented a new academic calendar (UNSW3+) beginning from 2019. The new calendar will have three 10-week Terms instead of two 12 week Semesters. The current application processes to our world leading pathway programs are unchanged. You can also find additional information about the new UNSW3+ calendar at student.unsw.edu.au/new-calendar. It's an exciting time for UNSW and UNSW Global and we look forward to you joining us in this new development.

	2019												2020												2021								
	JUNE	JULY	AUGUST	SEPTEMBER	OCTOBER	NOVEMBER	DECEMBER	JANUARY	FEBRUARY	MARCH	APRIL	MAY	JUNE	JULY	AUGUST	SEPTEMBER	OCTOBER	NOVEMBER	DECEMBER	JANUARY	FEBRUARY	MARCH	APRIL	MAY	JUNE								
Foundation Studies – Extended Program	Extended 12 Jun 2019 – 17 Jul 2020																								Extended 16 Jun 2021 – 15 Jul 2022								
				Optional English 10 wks 5 Aug – 11 Oct 2019			Extended 16 Oct 2019 – 20 Nov 2020																										
							Optional English 10 wks 6 Jan – 13 Mar 2020			Extended 25 Mar 2020 – 16 Apr 2021																							
										Optional English 10 wks 16 Mar – 22 May 2020			Extended 17 Jun 2020 – 16 Jul 2021																				
																Optional English 10 wks 3 Aug – 9 Oct 2020			Extended 14 Oct 2020 – 19 Nov 2021														
																			Optional English 10 wks 4 Jan – 12 Mar 2021			Extended 29 Mar 2021 – 15 Apr 2022											
Foundation Studies – Standard Plus Program	Optional English 10 wks 27 May – 2 Aug 19			Standard Plus 28 Aug 2019 – 17 Jul 2020															Optional English 20 wks 4 Jan – 21 May 2021 15 wks 8 Feb – 21 May 2021 10 wks 15 Mar – 21 May 2021														
				Optional English 20 wks 5 Aug – 20 Dec 2019 15 wks 9 Sep – 20 Dec 2019 10 wks 14 Oct – 20 Dec 2019						Standard Plus 8 Jan – 20 Nov 2020																							
							Optional English 20 wks 6 Jan – 22 May 2020 15 wks 10 Feb – 22 May 2020 10 wks 16 Mar – 22 May 2020			Standard Plus 3 Jun 2020 – 16 Apr 2021																							
										Optional English 20 wks 16 Mar – 31 Jul 2020 15 wks 20 Apr – 31 Jul 2020 10 wks 25 May – 31 Jul 2020			Standard Plus 26 Aug 2020 – 16 Jul 2021																				
																Optional English 20 wks 3 Aug – 18 Dec 2020 15 wks 7 Sep – 18 Dec 2020 10 wks 12 Oct – 18 Dec 2020			Standard Plus 6 Jan – 19 Nov 2021														
Foundation Studies – Standard Program	Optional English 10 wks 27 May – 2 Aug 19			Standard 26 Aug 2019 – 10 Apr 2020									Optional English 20 wks 25 May – 9 Oct 2020 15 wks 29 Jun – 9 Oct 2020 10 wks 3 Aug – 9 Oct 2020						Standard 11 Nov 2020 – 16 Jul 2021														
	Optional English 20 wks 27 May – 11 Oct 2019 15 wks 1 Jul – 11 Oct 2019 10 wks 5 Aug – 11 Oct 2019			Standard 13 Nov 2019 – 17 Jul 2020												Optional English 20 wks 12 Oct 2020 – 12 Mar 2021 15 wks 16 Nov 2020 – 12 Mar 2021 10 wks 4 Jan 2020 – 12 Mar 2021			Standard 24 Mar – 19 Nov 2021														
							Optional English 20 wks 14 Oct 2019 – 13 Mar 2020 15 wks 18 Nov 2019 – 13 Mar 2020 10 wks 6 Jan 2019 – 13 Mar 2020			Standard 25 Mar – 20 Nov 2020																							
										Optional English 20 wks 16 Mar – 31 Jul 2020 15 wks 20 Apr – 31 Jul 2020 10 wks 25 May – 31 Jul 2020			Standard 24 Aug 2020 – 16 Apr 2021																				
	UNSW TERM 2 BEGINS												UNSW TERM 3 BEGINS												UNSW TERM 1 BEGINS								

BUILD YOUR FUTURE

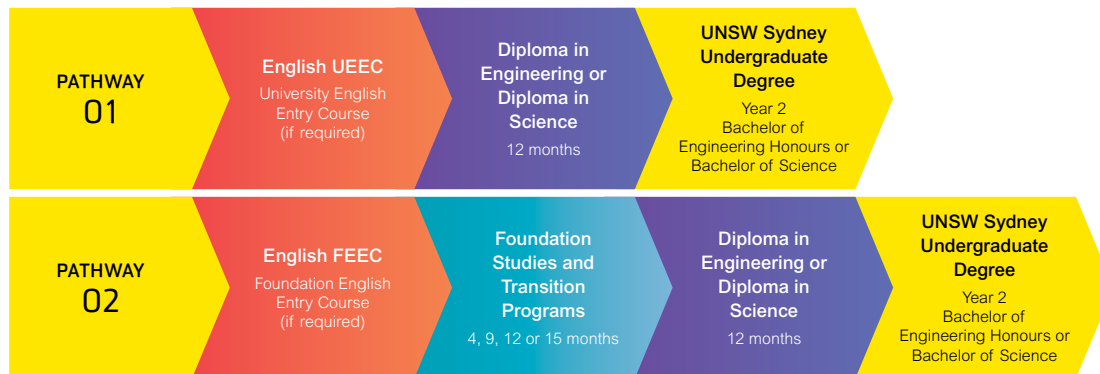
DIPLOMA PROGRAMS

A UNSW Diploma in Engineering or Science provides you with a fast track to success. It's designed for international students who miss out on direct entry to a UNSW degree and who want a fast track to the second year of a degree in Engineering or Science at UNSW Sydney. When you complete your degree, you'll have not just one, but two UNSW Sydney qualifications – a Diploma and a Bachelor Degree.



YOUR PATHWAYS

Start your future with a UNSW Diploma and gain entry to Second Year undergraduate studies at UNSW Sydney.



As a Diploma Program student, you'll experience:

- Studying equivalent courses to First Year undergraduate degree students.
- Extra support with additional class time, small tutorial classes and additional free tutoring consultations.
- A diploma that's tailored to you, as an international student, and designed to prepare you for success in your diploma and degree studies.



WHY STUDY A UNSW DIPLOMA?



You can enter straight into Second Year of a Science or Engineering undergraduate degree at UNSW on successful completion of your diploma.¹



Study on a world-class campus at UNSW Sydney and enjoy access to the same facilities, clubs and societies as First Year undergraduate students.



Earn both a UNSW Diploma and a full UNSW Bachelor Degree on graduation from your degree.



¹ Students who become Australian permanent residents or Australian Citizens during a Diploma Program will be subject to additional competitive processes for entry to a UNSW Sydney degree program. Students must complete the pre-requisite courses in a Diploma within 24 months to progress to second year. If you are an Australian or New Zealand citizen or Australian permanent resident, contact us to discuss your options.



DIPLOMA IN ENGINEERING 12 MONTHS

Your UNSW Engineering experience starts here. A Diploma in Engineering is your first step to achieving your career goals of working in one of the many exciting areas of engineering. A Diploma in Engineering enables you to transition straight into second year courses and exit with a full UNSW Engineering Honours degree. When you study engineering at UNSW Sydney, you'll be studying under the best minds in the country and in the #1 Engineering Faculty in Australia.

Degree Specialisations

Each Diploma in Engineering specialisation includes a total of 9 courses which you will study across three 12-week terms. In a typical term, you will study three main courses.

Select your specialisation upfront, but you can change specialisations at various points during your program. However the later you change your mind, the more time it will take you to complete all the required courses.¹

AREAS OF SPECIALISATION IN ENGINEERING

Aerospace Engineering	Electrical Engineering	Mechatronic Engineering
Bioinformatics	Environmental Engineering	Mining Engineering
Chemical Engineering	Mechanical Engineering	Petroleum Engineering
Chemical Product Engineering	Mechanical and Manufacturing Engineering	Photovoltaics & Solar Energy
Civil Engineering	Materials Science & Engineering	Renewable Energy Engineering
Computer Engineering		Telecommunications

¹ If you wish to study a Specialisation not on this list, eg Computer Science, you will receive credit for all courses that are common between the two Specialisations. For courses that are not common you can, in many cases, claim credit as Electives. How much credit you receive depends on the Specialisation; in the case of Computer Science, you receive credit for all First Year diploma courses.



PROGRAM DATES AND FEES

DIPLOMA IN ENGINEERING

Start date	Finish date	Continue 2nd Year UNSW Bachelor Degree	Fees
9 Sep 2019	21 Aug 2020	Sep 2020	\$41,997
20 Jan 2020	11 Dec 2020	Feb 2021	\$43,177
11 May 2020	30 Apr 2021	May 2021	\$43,177
31 Aug 2020	20 Aug 2021	Sep 2021	\$43,177
18 Jan 2021	10 Dec 2021	Feb 2022	TBA

DIPLOMA IN SCIENCE

Start date	Finish date	Continue 2nd Year UNSW Bachelor Degree	Fees
9 Sep 2019	21 Aug 2020	Sep 2020	\$38,379
20 Jan 2020	11 Dec 2020	Feb 2021	\$38,380
11 May 2020	30 Apr 2021	May 2021	\$38,380
31 Aug 2020	20 Aug 2021	Sep 2021	\$38,380
18 Jan 2021	10 Dec 2021	Feb 2022	TBA

OPTIONAL ENGLISH FOR DIPLOMAS

ENGLISH FEES

10 weeks	1 Jul 2019 – 6 Sep 2019	\$5,600
15 weeks	27 May 2019 – 6 Sep 2019	\$8,400
10 weeks	14 Oct 2019 – 20 Dec 2019	\$5,600
15 weeks	9 Sep 2019 – 20 Dec 2019	\$8,400
20 weeks	5 Aug 2019 – 20 Dec 2019	\$11,200
10 weeks	10 Feb 2020 – 17 Apr 2020	\$5,650
15 weeks	6 Jan 2020 – 17 Apr 2020	\$8,475
20 weeks	18 Nov 2019 – 17 Apr 2020	\$11,200
10 weeks	25 May 2020 – 31 Jul 2020	\$5,650
15 weeks	20 Apr 2020 – 31 Jul 2020	\$8,475
20 weeks	16 Mar 2020 – 31 Jul 2020	\$11,300
10 weeks	12 Oct 2020 – 18 Dec 2020	\$5,650
15 weeks	7 Sep 2020 – 18 Dec 2020	\$8,475
20 weeks	3 Aug 2020 – 18 Dec 2020	\$11,300

OTHER DIPLOMA PROGRAM AND ENGLISH LANGUAGE COURSE FEES IN AUSTRALIAN DOLLARS (AUD)

Student Services and Amenities Fee TBA.

Overseas Students Health Cover (OSHC) The length of OSHC will be calculated and advised depending on your proposed enrolment period.

Airport Pick-up \$150 (if required).

Care Arrangements/Guardianship Fee (only if student is under 18 years of age) \$150 initial fee/\$49 per week until student is 18 (if required).

UNSW Diploma Programs fees may be paid in instalments, details will be listed in your letter of offer received following your application. (Diploma in Engineering CRICOS Course Code 095863M; Diploma in Science CRICOS Course Code 095862A). Minimum living costs in Sydney are approximately AUD\$22,000 per year. No additional application, laboratory or library fees. Note: 2021 fees to be confirmed.

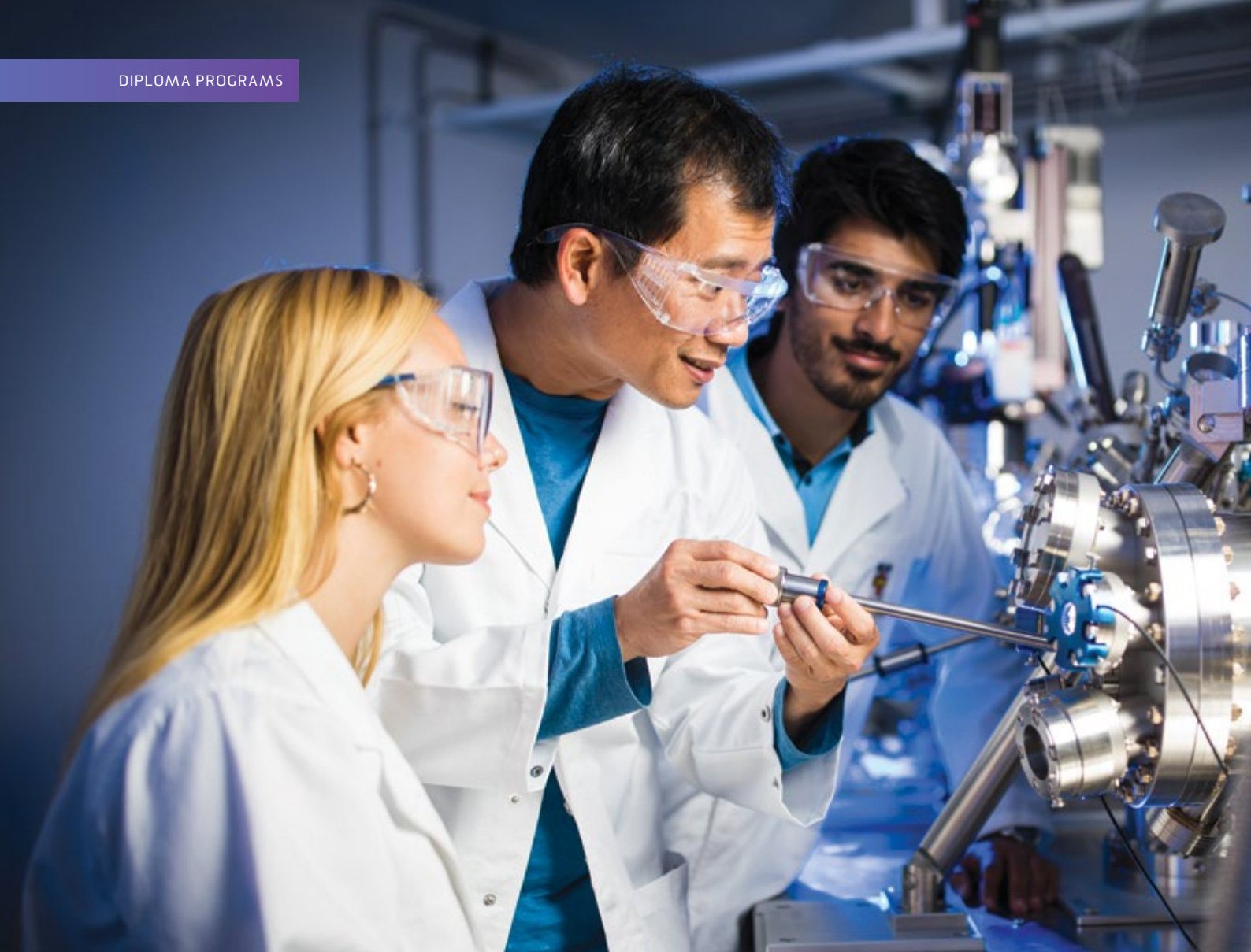


After successfully completing the Diploma Program, you will go straight into second year of your chosen undergraduate Engineering degree program at UNSW Sydney.² The duration of your study from the start of the diploma to the end of the bachelor program is the same as for a UNSW direct entry student.

All undergraduate Engineering Honours programs offered by the UNSW Faculty of Engineering are accredited by Engineers Australia, and meet the examination requirements for admission to graduate membership.

² Students who become Australian permanent residents or Australian Citizens during a Diploma Program will be subject to additional competitive processes for entry to a UNSW Sydney degree program. Students must complete their Diploma within 24 months to progress to second year. If you are an Australian or New Zealand citizen or Australian permanent resident, contact us to discuss your options.





DIPLOMA IN SCIENCE 12 MONTHS

A Diploma in Science is a powerful transition to further your study and develop a career in the sciences. The Faculty of Science enrolls the brightest students from around the world who want to learn from award-winning academics, access world-class facilities and connect with industry leaders. The UNSW Science Faculty has more than 400 staff and 700 researchers. A Diploma in Science enables you to transition straight into second year Degree courses.

Degree Specialisations

Each Diploma in Science specialisation includes 8 courses which you will study across three 12-week terms. In most terms, you will study 3 main courses.

Select your specialisation upfront, but you can change specialisations at various points during your program. However the later you change your mind, the more time it will take you to complete all the required courses.¹

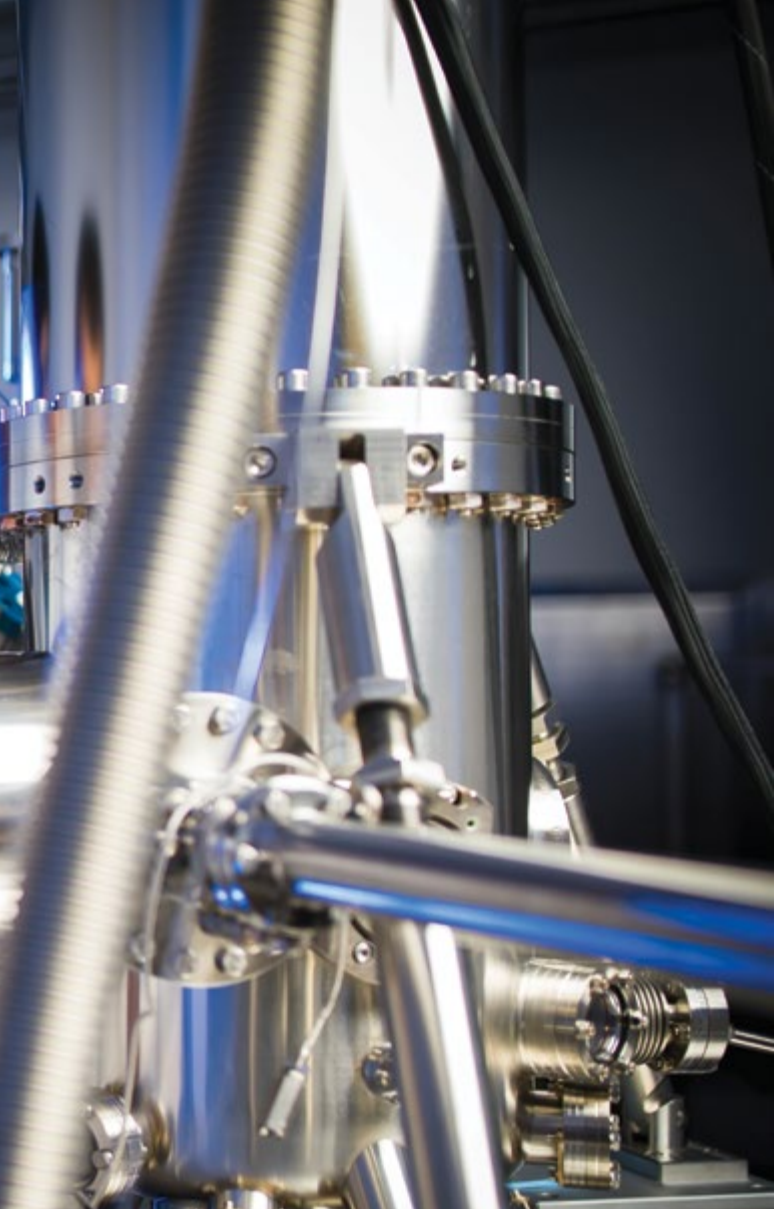
AREAS OF SPECIALISATION IN SCIENCE

Anatomy	Materials Science	Pharmacology
Biology ²	Mathematics	Physical Oceanography
Chemistry	Microbiology	Physics
Food Science ²	Molecular & Cell Biology	Physiology
Genetics	Pathology	Statistics
Marine Science ²		

← FOR PROGRAM DATES AND FEES PLEASE SEE PAGE 21

¹ If you wish to study a Specialisation not on this list, eg Psychology, you will receive credit for all courses that are common between the two Specialisations. For courses that are not common you can, in many cases, claim credit as Electives. How much credit you receive depends on the Specialisation.

² Specific subjects are required in second year, which may increase program duration.



Successful completion of your Diploma Program offers entry into second year of your chosen undergraduate Science program at UNSW Sydney.³ The entire study duration from the start of your diploma to the end of the bachelor program is the same as that for a UNSW direct entry student.

³ Students who become Australian permanent residents or Australian Citizens during a Diploma Program will be subject to additional competitive processes for entry to a UNSW Sydney degree program. Students must complete their Diploma within 24 months to progress to second year. If you are an Australian or New Zealand citizen or Australian permanent resident, contact us to discuss your options.



“A Degree in Engineering and Science can offer almost limitless possibilities, it just depends on how the person holding the degree chooses to use it.”

DR THOMAS MURPHY

DIPLOMA PROGRAMS
CHEMISTRY LECTURER

What does an average day look like for a Diploma student?

Typical diploma students will have 24 hours of class time each week spread across their courses. A typical day includes two or three 1-hour lectures, a tutorial class and perhaps a practical laboratory class with the day usually over by 5pm. Classes are spread across the day so students also have time in between in which they can study, meet with friends or eat a meal.

What career outcomes are available for undergraduate students with a Degree in Engineering and Science?

A Degree in a STEM field gives many opportunities from starting a professional research career with a university to being a researcher for a commercial company. Some people go on to be advisors for governments or consultants for private companies, giving their expert advice. Some go on to start their own companies like Tesla and Space-X. Some become teachers training the next generation of scientists and engineers, and some go on to apply the data analysis skills they learnt in other areas of business and government.

ACADEMIC ENTRY REQUIREMENTS

To be eligible to enrol in a UNSW Diploma Program, you must complete High School or an equivalent qualification, though forecast results may be accepted on application and in advance of completing High School. The Academic Entry Requirements listed below are a guide only. If you have any questions, please contact your agent or contact us through our website unswglobal.unsw.edu.au/diploma

QUALIFICATION	ENGINEERING DIPLOMA	SCIENCE DIPLOMA
UNSW Foundation Studies	7	6.4
Australia (ATAR)	75	70
ACT (American College Testing)	22	20
Bangladesh*	80% (average of five best subjects)	75% (average of five best subjects)
Brazil*	8.5/B average (of six best subjects)	8/B average (of six best subjects)
Britain (GCE A Levels)*	6 (D average of 2-4 A2 subjects)	5 (D average of 2-4 A2 subjects)
Cambodia*	17 (A/B average of four best subjects)	16 (B average of four best subjects)
Canadian BC	B average of all Year 12 subjects except Graduation Transitions	B/C average of all Year 12 subjects except Graduation Transitions
Canadian OSSD	75% (average of six best subjects)	68% (average of six best subjects)
Chile*	6.5 (average of six best subjects)	6.0 (average of six best subjects)
China (GaoKao)	70%	65%
German Abitur	2.5 (average of four best subjects)	3.0 (average of four best subjects)
HKDSE (Hong Kong)	14 (sum of five best Core and Category A)	13 (sum of five best Core and Category A)
International Baccalaureate*	25 (total of six best subjects)	24 (total of six best subjects)
India (AISSC)	B2 average of four best subjects	C1 average of four best subjects
India (ISC)	78% (A/B average of three best subjects)	75% (A/B average of three best subjects)
Indonesia*	8 (average of four best subjects)	7 (average of four best subjects)
Iran (konkur)*	15 (average of four best subjects)	13 (average of four best subjects)
Japan (Upper Sec)*	75% (average of four best subjects)	70% (average of four best subjects)
Japan (National)	53 (average best six Hensachi scores)	50 (average best six Hensachi scores)
Kenya*	65 (average of seven best subjects)	60 (average of seven best subjects)
Korean CSAT	300	300
Korean Yr.12*	80% (average of four best subjects)	80% (average of four best subjects)
Macau*	80% (average of four best subjects)	75% (average of four best subjects)
Malaysia (STPM)	C+/C average of four best subjects	C average of four best subjects
Malaysia (UEC)	4 (B4 average of five best subjects)	4 (B4 average of five best subjects)
Middle East (Saudi, UAE)*	90% (average of four best subjects)	90% (average of four best subjects)
Myanmar*	85% (average of four best subjects)	80% (average of four best subjects)
Nepal*	85% (average of five best subjects)	85% (average of five best subjects)
New Zealand	80 (>= 65 at Level 3 and <=20 at Level 2)	70 (>= 60 at Level 3 and <=20 at Level 2)
Norway	3 (average of five best subjects)	2 (average of five best subjects)
Pakistan*	880	800
Philippines*	85% (average of four best subjects)	85% (average of four best subjects)
Russia*	4.5 (average of four best subjects)	4.5 (average of four best subjects)
SAT	1100	1050
Singapore A Levels*	9 (max 3 H1, max 3 H2 and max 1 H3 subjects)	8 (max 3 H1, max 3 H2 and max 1 H3 subjects)
Sri Lanka A Levels	C/S average of three best subjects	S average of three best subjects
Taiwan GSAT*	60	55
Taiwan Senior 3*	80% (average of four best subjects)	75% (average of four best subjects)
Thailand*	3.0 (average of six best subjects)	2.8 (average of six best subjects)
Uganda*	B/C average of four best subjects	C/D average of four best subjects
Vietnam*	30 (total four best subjects)	30 (total four best subjects)
(WASSC) West Africa*	6 (total four best subjects)	8 (total four best subjects)

Engineering CRICOS Course Code 095863M, Science CRICOS Course Code 095862A

1 In most cases, Year 12 forecast results (Semester 1) are accepted. See qualifications with * symbol.

2 This table is a guide only. For additional qualifications, please enquire at admissions@unswglobal.unsw.edu.au

3 Additional prerequisites in mathematics and science may apply.

4 If you are eligible for direct entry to the corresponding degree program at UNSW you will not be admitted to the Diploma program.

ENGLISH REQUIREMENTS

Before entering a UNSW Diploma Program, you must have a minimum level of English language proficiency. Here is a list of the English qualifications that are accepted for entry to a UNSW Diploma Program.

If you have English qualifications other than those listed below, you may still apply to enter these programs. If you have any questions, please speak to your agent or contact us through our website unswglobal.unsw.edu.au/diploma

Other English qualifications will be considered on a case-by-case basis.

Don't have English qualifications? Please visit unswglobal.unsw.edu.au/diploma

ENTRY REQUIREMENTS	DIPLOMA	UEEC (10 WEEKS)	UEEC (15 WEEKS)	UEEC (20 WEEKS)
IELTS* (Academic Module)	6.0, Writing 6.0 (Sub-scores 5.5)	6.0, Writing 5.5 (Sub-scores 5.0)	5.5, Writing 5.5 (Sub-scores 5.0)	5.5, Writing 5.0 (Sub-scores 5.0)
TOEFL** (Paper-based PBT)	550, TWE 4.5	537, TWE 4.5	513, TWE 4.5	513, TWE 4.0
TOEFL** (Internet-based iBT)	75, Writing 20	75, Writing 18	65, Writing 18	65, Writing 14
Cambridge Advanced English	169, Writing 169 (Sub-scores 162)	169, Writing 162 (Sub-scores 154)	162, Writing 162 (Sub-scores 154)	162, Writing 154 (Sub-scores 154)
Pearson Test of English	50, Writing 50 (Sub-scores 46)	50, Writing 46 (Sub-scores 38)	46, Writing 46 (Sub-scores 38)	46, Writing 38 (Sub-scores 38)
UNSW Institute of Languages	C, Writing C	C, Writing D+	D+, Writing D+	D+, Writing D
A-Level English	C (A-or AS-Level) Humanities subject or General Paper	D	E	
HKDSE English	3, Writing 3	3, Writing 2	2, Writing 2	2

OTHER ENGLISH ENTRY REQUIREMENTS

Other Australian Foundation Programs	60% to 65% in English
All India Senior School Certificate – [CBSE]	Grade of C2 in English Core
Indian School Certificate – [ICSE]	60% (C) in English
Malaysia (STPM)	Pass in 920 English or C in 914 English, (UEC) B3 in English
International Baccalaureate Diploma (IB)	3.0 in English A Language and Literature, or Literature (at SL or HL), 3.5 in English B (at SL or HL)

Note 1 English language tests should normally have been taken within 2 years of the commencement date. The marginal rules below nominate exceptions to this rule.

Note 2 The English language requirements may be satisfied by successful completion of full-time secondary or tertiary studies, or equivalent qualification, with a duration of at least one year, from an approved institution.

Note 3 Diploma Programs will accept all IELTS results that expire within 1-month of the program start date (ie 25 months old).

Note 4 If the result is higher than the overall program requirement and has been taken within the past 5 years, refer to UNSW Global for marginal assessment.

*IELTS International English Language Testing System. Tests are conducted at a number of locations around the world, including at UNSW Global in Australia.

**TOEFL Test of English as a Foreign Language. A TOEFL score is not acceptable without the Test of Written English (TWE) for paper-based and computer-based tests or Writing for Internet-based tests. UNSW Global is registered as a test site for the TOEFL iBT.

For full details of entry requirements please visit unswglobal.unsw.edu.au/diploma

UNSW UNDERGRADUATE ENTRY REQUIREMENTS

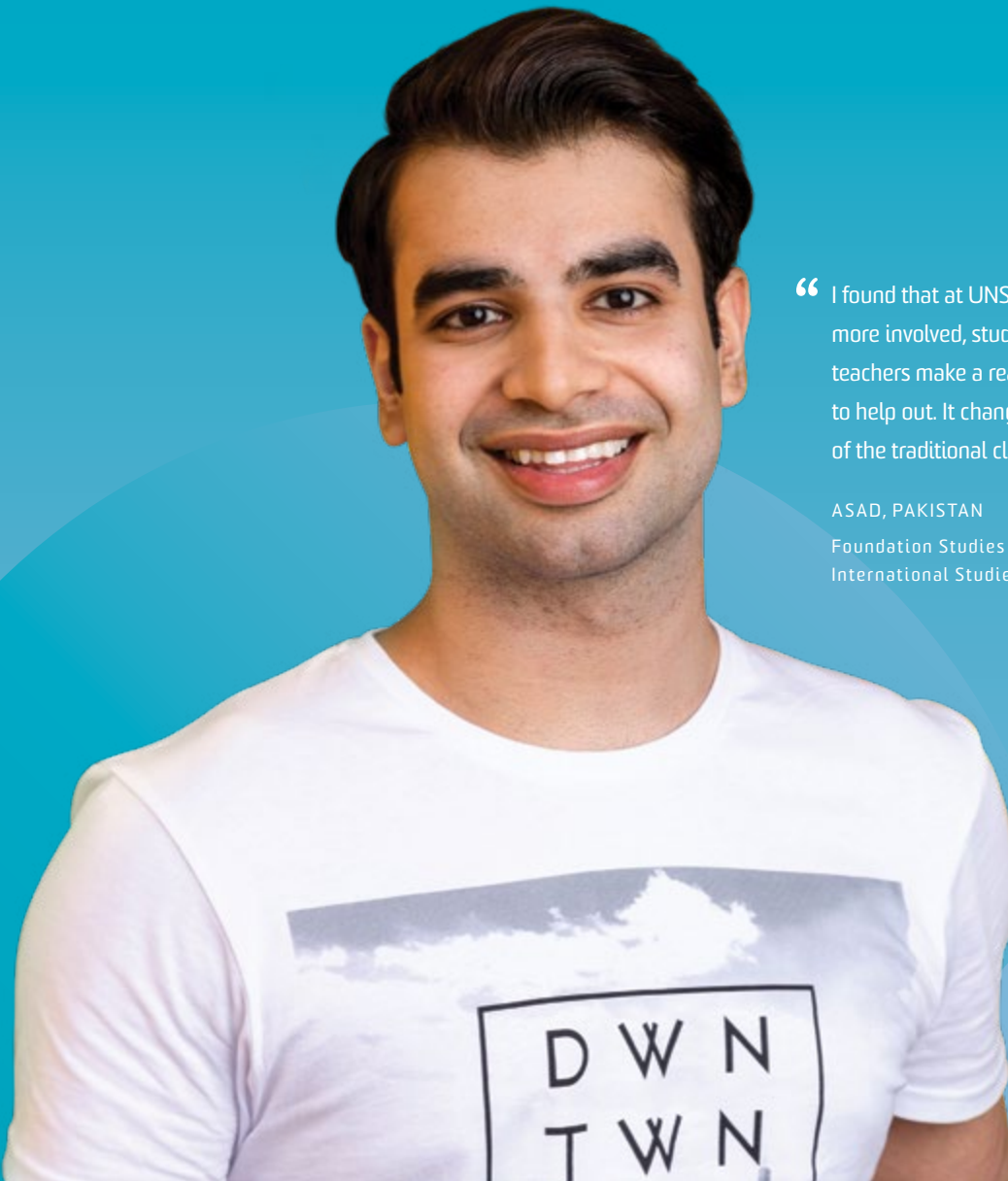
To be eligible to enter Year 2 of your chosen degree at UNSW, you must pass all discipline-specific diploma courses (50%) and receive a 'Satisfactory' grade for the Communication and Academic Literacy course (70%).

THE FOUNDATION FOR YOUR UNSW EXPERIENCE

FOUNDATION STUDIES PROGRAMS

This is where your global journey starts. UNSW Foundation Studies Programs are between 4 and 15 months long, based on your academic and English language background. UNSW Foundation Studies provides pathways to all UNSW undergraduate degree programs and is also accepted for entry by all Australian universities.

You'll study under the tutelage of experienced academics and alongside your international peers, making lifelong networks amongst a diverse global community. You'll be supported throughout your UNSW Global experience, with extra consultations, support groups and learning resources. And as you transition into UNSW, you'll be perfectly placed to meet the academic demands of your chosen degree.



“ I found that at UNSW Global everyone is way more involved, students are keen to learn and teachers make a real effort in and out of class to help out. It changed my whole perspective of the traditional classroom set-up. ”

ASAD, PAKISTAN

Foundation Studies Standard Program
International Studies

YOUR PATHWAYS



WHY STUDY A FOUNDATION STUDIES PROGRAM WITH UNSW GLOBAL?

UNSW Global Foundation Studies Programs build a strong academic base from which students can successfully progress to UNSW Sydney. Progression rates from Foundation Studies programs to university are above 85%. Recently, 90% of our Transition students who finished their program in January 2019 were eligible for a UNSW Sydney degree program.



More than 30,000 students have completed our Foundation Studies Programs and are now enjoying success at university and in their careers, both in Australia and around the world.



Our Foundation Studies teaching follows university practice with lectures and tutorials, so that you'll make an easy transition to university learning.



Tutorial classes generally include 18 students, so each learner receives individual attention. And if you need additional tutoring, you can attend voluntary consultations.



Our program is delivered on the UNSW Sydney campus and you'll find a ready-made network of friends from around the world to study with and learn from.



We have over 30 years' experience preparing students for university and were the first Foundation program in Australia.



You'll have access to expert teachers who are committed and experienced in teaching international students, educate in an engaging manner, and who will support you on your learning journey.



In 2018 UNSW Business, Engineering and Built Environment (Architecture) were the top three degrees that Foundation Students progressed into followed by Law, Arts and Social Sciences, Art and Design and Medicine.

OUR PROGRAMS

Extended Foundation Studies Program 15 MONTHS

Do you require additional time to develop your English and Academic skills? With the Extended Program you can improve your English skills and at the same time get a head start on your academic program. To enter our Extended Program, students must have completed at least 11 years of schooling or equivalent, and have an IELTS of 5.0 with a 5.0 in writing and 4.5 minimum in all bands (or equivalent).

Standard Plus Foundation Studies Program 12 MONTHS

If you don't meet the entry requirements for the Standard Program, or if you need a slightly longer academic program with a slower study pace, choose the Standard Plus Program to help you progress with ease into your university degree. To enter our Standard Plus Program, you must have completed 11 years of schooling or equivalent, and have an IELTS of 5.5 with a minimum 5.0 in all bands (or equivalent).

Standard Foundation Studies Program 9 MONTHS

The Standard Program is faster and aimed at students with a strong academic and English background. To enter our Standard Program, you must have completed 11 or 12 years of schooling (eg GaoEr/GaoSan, O/A levels, SMA 2/3, HKDSE forms 5/6) with good grades and strong English language proficiency. Students should have an IELTS of 6.0 (or equivalent) with a 5.0 in all bands (or equivalent), and may apply using Semester 1 (Year 11 or 12) school results.

Transition Program 4 MONTHS

Do you require a short intensive program to enable you to enter university? To enter our Transition Program you should have completed a matriculation program or a senior high school qualification. For example Gaokao, HKDSE, IB Diploma, SMA-3 or A-Levels. The Transition Program offers Physical Science, Life Science, Commerce and Actuarial Streams only. You should have an IELTS of 6.0 (or equivalent) with a 5.5 in writing and a minimum of 5.0 in all other bands (or equivalent).

FOR PROGRAM DATES AND FEES PLEASE SEE PAGE 31 >



“ I really like the learning environment here at UNSW Global and how teachers support a variety of different ways of learning. ”

SAMIYA, BANGLADESH
 Foundation Studies
 Standard Plus Program
 Physical Science

OUR TEACHERS



Dr Ruth McDermott

DESIGN CO-ORDINATOR

What are your teaching background and teaching credentials?

I had been teaching in the higher education sector for over 20 years prior to starting at UNSW Global. I have also been a design practitioner for over 30 years and am still in practice. I have won several design awards and have a PhD in Design.

What are the benefits of undertaking the Foundation Studies Program?

The design stream is a great introduction to design concepts and ideas before undertaking university study. Students acquire useful skills and knowledge about design allowing them to be able to present their work and articulate their process.

What are the career outcomes for students?

Upon completion of their Foundation Studies program our design students have gone onto study architecture, industrial design, graphic design and media.

Dr Avi Shalav

SENIOR PHYSICS TEACHER

Why did you choose to teach at UNSW Global?

UNSW Global has provided me with the opportunity to continue my own professional development via a curriculum development role and ongoing training with the implementation of modern best teaching practices. By applying this knowledge to the classroom environment, I was awarded the 2018 UNSW Global Learning and Teaching award for teaching excellence (for creating learning environments that are engaging and challenging).

What career outcomes are available for UNSW Global Students?

The UNSW Global education programs are diving boards into the exciting ocean of tertiary education. My postgraduate degree from UNSW was internationally recognised and enabled me to travel the world and establish myself as a scientist at the forefront of nanotechnology semiconductor device research.



STUDY STREAMS

Our Streams (pathways) of study have been designed to prepare you for UNSW degree programs. All streams of study are available in Extended, Standard and Standard Plus Foundation Studies Programs. The Transition Program offers the Physical Science, Life Science, Commerce and Actuarial streams only.

COURSE	Units	STREAMS OF STUDY						
		Physical Science	Life Science	Commerce	Actuarial Studies	Arts & Social Sciences	Design & Built Environment	
Academic English	10	•	•	•	•	•	•	
Communication for Success	2	•	•	•	•	•	•	
Computing for Academic Purposes	4	•	•	•	•	•		
Computing for Design	6						•	
Accounting	4			•	•			
Biology	10		•					
Business Law	4			•	•			
Chemistry	10	•	•					
Culture and Communication	12					•	•	
Design	12						•	
Economics	10			•	•			
International Issues and Perspective	10					•		
Management	4			•	•	•		
Maths C (Commerce)	10			•				
Maths E (Essentials)	6					•	•	
Maths S (Science)	12	•	•		•			
Physics	10	•						
Total units		48	48	48	50	48	48	
Popular degree programs	Engineering, Science, Medicine, Medical Science, Aviation, Optometry, Health and Exercise Science, Biomedical Sciences, Psychology, Food Science, Technology		Accounting, Finance, Economics, Actuarial Studies, Arts, Social Science, some Law degrees, International Business, Banking and Marketing, Construction Management and Property			Arts, some Law degrees, Arts and Business, Criminology, Education, Social Science, International Studies, Languages, Media (Communications and Journalism; Public Relations and Advertising; Screen and Sound), Social Work, Music, Politics, Philosophy and Economics.		Architectural Studies, Interior or Landscape Architecture, Industrial Design, Media Arts, Design, Art Theory, Fine Arts, Planning, Construction Management and Property, Media, Social Science

HOW DOES UNSW FOUNDATION STUDIES CALCULATE YOUR GPA?

You will receive a letter grade for each completed subject. This letter is associated with a numerical grade point (see below). Overall program performance is expressed as a Grade Point Average (GPA). Your GPA is calculated as an average score across your subjects using your grade point multiplied by the unit of each respective subject.

LETTER GRADE	A+	A	A-	B+	B	B-	C+	C	C-	D+	D	D-	E+	E	E-	F	UF
GRADE POINT	10	9.5	9	8.5	8	7.5	7	6.5	6	5.5	5	4.5	4	3.5	3	0	0

Example 1 Academic English (B+), Mathematics S (A), Physics (C+), Chemistry (B-), Computing (D+)
 $(10 \times 8.5) + (12 \times 9.5) + (10 \times 7) + (10 \times 7.5) + (6 \times 5.5) = 377/48 = 7.9$

Example 2 Academic English (B), Design (A+), Australian Studies (B+), Maths Essentials (C-), Computing (C-)
 $(10 \times 8) + (12 \times 10) + (12 \times 8.5) + (8 \times 6) + (6 \times 6) = 386/48 = 8.0$

The courses listed for each stream of study are accurate at the time of publishing. If you would like to confirm courses and streams of study before your program begins, please contact UNSW Global Admissions at: admissions@unswglobal.unsw.edu.au

PROGRAM DATES AND FEES

Extended Foundation Studies Program 15 MONTHS

START	FINISH	START UNSW DEGREE
12 June 2019	17 July 2020	September 2020
16 October 2019	20 November 2020	February 2021
25 March 2020	16 April 2021	May 2021
17 June 2020	16 July 2021	September 2021
14 October 2020	19 November 2021	February 2022
29 March 2021	15 April 2022	May 2022
16 June 2021	15 July 2022	September 2022

AUD \$45,800 (2020)

Standard Plus Foundation Studies Program 12 MONTHS

START	FINISH	START UNSW DEGREE
28 August 2019	17 July 2020	September 2020
8 January 2020	20 November 2020	February 2021
3 June 2020	16 April 2021	May 2021
26 August 2020	16 July 2021	September 2021
6 January 2021	19 November 2021	February 2022
2 June 2021	15 April 2022	May 2022
25 August 2021	15 July 2022	September 2022

AUD \$39,500 (2020)

Standard Foundation Studies Program 9 MONTHS

START	FINISH	START UNSW DEGREE
26 August 2019 ¹	10 April 2020	May 2020
13 November 2019	17 July 2020	September 2020
25 March 2020	20 November 2020	February 2021
24 August 2020	16 April 2021	May 2021
11 November 2020	16 July 2021	September 2021
24 March 2021	19 November 2021	February 2022
23 August 2021	15 April 2022	May 2022
10 November 2021	15 July 2022	September 2022

AUD \$33,850 (2020)

Transition Program 4 MONTHS

START	FINISH	START UNSW DEGREE
21 August 2019	13 December 2019	February 2020
23 September 2019	17 January 2020	February 2020
6 January 2020 ²	24 April 2020	May 2020
30 March 2020	24 July 2020	September 2020
24 August 2020	11 December 2020	February 2021
4 January 2021	23 April 2021	May 2021
29 March 2021	23 July 2021	September 2021
23 Aug 2021	10 December 2021	February 2022

AUD \$22,800 (2020)

Other UNSW Global additional fees in Australian dollars (AUD)

DESCRIPTION	PAYABLE	AMOUNT
Enrolment fee	Payable on Acceptance of Offer.	AUD \$300
Administration fee	Payable for all withdrawals and transfers; and for change of class/stream more than once.	AUD \$300
Late payment fee	Payable when a payment is not made by its due date.	AUD \$300
Care arrangements/ Guardianship fee	Is payable by those under 18 students seeking UNSW Global to approve their care arrangements and issue them with a CAAW Letter (confirmation of accommodation and welfare letter).	AUD \$150
Under 18 monitoring fee	Is payable for students that are under 18 years of age and have been issued a CAAW letter by UNSW Global. The monitoring fee is payable for the period specified in the CAAW.	AUD \$49 per week
Airport pick-up fee	Is payable for all students who book an airport pick-up through UNSW Global.	AUD \$150
Overseas Students Health Cover (OSHC)	Is payable by all overseas students on a student visa. The amount payable for OSHC is calculated by the length of your proposed enrolment period. Please contact Admissions to determine actual cost.	AUD \$TBC

UNSW Foundation Studies Programs fees may be paid in two instalments and dates will be listed in your letter of offer received following your application. Transition program fees are due when accepting your offer.

Foundation Studies Programs (CRICOS Provider Code 00098G)
Transition Program (CRICOS Course Code 060623E)
Standard Foundation Studies Program (CRICOS Course Code 000725G)
Standard Plus Foundation Studies Program (CRICOS Course Code 019277D)
Foundation English Entry Course (FEEC) (CRICOS Course Code 080691E)

Minimum living costs in Sydney are approximately AUD\$22,000 per year. No additional application, laboratory or library fees.

Note 2021 fees to be confirmed.

Note For your convenience most books are provided by UNSW Foundation Studies Programs at no additional cost.

Note The Standard, Standard Plus and Extended Foundation Programs meet the requirements for Foundation Programs which have been registered on CRICOS for delivery in Australia to overseas students providing an academic preparation for seeking entry to First Year undergraduate study or its equivalent.

¹ This intake offers the UNSW Foundation Studies Commerce, Physical Science and Actuarial streams only, leading to most Business, Engineering and Science degree programs at UNSW. For a full list of degree programs see unswglobal.unsw.edu.au/programs-courses/foundation-studies/standard

² For this Transition intake, most UNSW Business, Engineering and Science degree programs are available. For a full list of degree programs see unswglobal.unsw.edu.au/programs-courses/foundation-studies/transition



ACADEMIC ENTRY REQUIREMENTS

We're here to help you transition easily into your university studies.

QUALIFICATION	EXTENDED	STANDARD PLUS	STANDARD	TRANSITION
Australia	Year 12: ATAR of 50 Year 11: 60% average	Year 12: ATAR of 55 Year 11: 65% average	Year 12: ATAR of 60 Year 11: 70% average	Year 12: ATAR of 70
British/UK System	O Level: C/D average	O Level: C average	O Level: B average	A Level: D average
Cambodia	Completion of Upper Secondary: D average	Completion of Upper Secondary: C average	Completion of Upper Secondary: B/C average	Cambodia Baccalaureate: B average
China	For Senior 3 (Gao San) and Senior 2 (Gao Er): 65% average	For Senior 3 (Gao San) and Senior 2 (Gao Er): 70% average	For Senior 3 (Gao San) and Senior 2 (Gao Er): 80% average	Gaokao: 60% average
Gulf CC Countries	Completion of Year 12 with 85% average	Completion of Year 12 with 85% average	Completion of Year 12 with 90% average	Completion of Year 12 with 90% average
Hong Kong	HKDSE: 6 points over best 3 from Category A Form 5: average 55%	HKDSE: 8 points over best 4 from Category A Form 5: average 60%	HKDSE: 11 points over best 5 from Category A Form 5 also considered	HKDSE: 13 points over best 5 from Category A
India	Year 12: Pass	Year 12: Pass	AISSC: C2 average ISC: 2nd class pass	AISSC: C1 average ISC 1st class pass (75%)
Indonesia	SMA 3: average 5.5 (60%) SMA 2: average 6.5 (65%)	SMA 3: average 6 (60%) SMA 2: average 7 (70%)	SMA 3: average 6.5 (65%) SMA 2: average 7.5 (75%)	SMA 3: average 7 (70%)
International Baccalaureate	Diploma/Certificates: 10 points over 4 subjects Year 1 of Diploma: 15 over 5 relevant subjects	Diploma/Certificates: 10 points over 4 subjects Year 1 of Diploma: 15 over 5 relevant subjects	Diploma/Certificates: 12 points over 4 subjects Year 1 of Diploma: 20 over 5 relevant subjects	IB 2-year Diploma: 24 points (4 average) over six subjects
Japan	General Upper Secondary School Year 3: C average	General Upper Secondary School Year 3: C average	General Upper Secondary School Year 3: B (65%) average	General Upper Secondary School Year 3: B (70%) average
Korea	High School (Year 2) Average Rank 4	High School (Year 2) Average Rank 4	High School (Year 3) Average Rank 4 or CSAT 265+	High School (Year 3) Average Rank 3 or CSAT 295+
Macau	English medium schools: 60% average in Form 5 Chinese medium schools: 65% average in Form 5	English medium schools: 60% average in Form 5 Chinese medium schools: 65% average in Form 5	English medium schools: 60% average in Form 6 Chinese medium schools: 65% average in Form 6	70% Form 6 (from selected schools only)
Malaysia	SPM/UEC: C/C8 average	SPM/UEC: C+/C7 average	SPM/UEC: B/B6 average	STPM: C average UEC: B4 average
Myanmar	Myanmar Matriculation: 55% average	Myanmar Matriculation: 60% average	Myanmar Matriculation: 70% average	Myanmar Matriculation: 80% average
SAT	800	850	900	1000
Singapore	GCE O Level: C6 average	GCE O Level: C5 average	GCE O Level: B4 average	GCE A: 8 points (max 3 H1, max 3 H2 and max 1 H3 subjects)
Taiwan	Senior 3 (Year 12): 60% average Senior 2 (Year 11): 70% average	Senior 3 (Year 12): 60% average Senior 2 (Year 11): 75% average	Senior 3 (Year 12): 70% average Senior 2 (Year 11): 80% average	Senior 3 (Year 12): 75% average GSAT 47 overall (65% average)
Thailand	Matayom 6: GPA of 2.0 (C grade average) Form 5 considered	Matayom 6: GPA of 2.0 (C grade average) Form 5 considered	Matayom 6: GPA of 2.2 (B/C grade average)	Matayom 6: GPA of 2.4 (B/C grade average)
Vietnam	Year 12: Average 6 over 4 relevant subjects Year 11: Average 6.5 over 4 relevant subjects	Year 12: Average 6 over 4 relevant subjects Year 11: Average 6.5 over 4 relevant subjects	Year 12: Average 6.5 over 4 relevant subjects Year 11: Average 7.5 over 4 relevant subjects	High School Graduation Certificate with 30 points or Year 12: Average 8 over 4 relevant subjects
Countries/Regions	For other countries/regions or for further information please contact us on T: +612 9385 0555 or admissions@unswglobal.unsw.edu.au			

¹ Where you do not have your final results from your Year 11 or Year 12 studies, forecast results are accepted in most cases.

² There may be specific subject requirements, depending on your intended degree program. For example, a minimum grade in mathematics and/or science.

³ Bonus points may be applied for key schools and for good results in relevant subjects.

CITIZENS AND RESIDENTS

Australian citizens and permanent residents, including students who have completed an Australian Year 12 Certificate, are also eligible to apply for all Foundation Studies Programs.

Australian Citizens or Australian Permanent residents:

- Pay the same Foundation Studies Program fees as international students.
- May be eligible for a Commonwealth supported place at UNSW on completion of the Foundation Studies Program.
- Apply to university via the Universities Admissions Centre (UAC) and may require higher grades depending on local demand, the same as other Australian students.
- Can either pay UNSW fees up-front or defer them and pay later through the tax system using the HECS-HELP scheme.
- Should enrol in a Foundation Studies Program concluding in time for entering Term 1 at university (Commonwealth places for UNSW Term 2 and Term 3 entry are limited and more competitive than Term 1 entry).
- May not be offered places at some universities that do not recognise Australian citizens or permanent residents who have studied Foundation Studies Programs. Our staff can provide advice on university applications.
- Non-tuition related fees listed at unswglobal.unsw.edu.au/foundation

ENGLISH REQUIREMENTS

Before entering UNSW Foundation Studies, students will need to have reached a minimum level of English language proficiency. If students have English qualifications other than those listed below, they may still apply to enter these programs. Other English qualifications will be considered on a case-by-case basis.

ENTRY REQUIREMENTS	EXTENDED	STANDARD PLUS	STANDARD	TRANSITION
Minimum IELTS Requirement	5.0 Writing 5.0 (other sub-scores 4.5)	5.5 Writing 5.0 (other sub-scores 5.0)	6.0 Writing 5.0 (other sub-scores 5.0)	6.0 Writing 5.5 (other sub-scores 5.0)
Toefl (Paper-based)	483 TWE 4.0	513 TWE 4.0	537 TWE 4.0	537 TWE 4.5
Toefl (Internet) iBT	56 Writing 14	65 Writing 14	75 Writing 14	75 Writing 18
Cambridge Advanced English	154 Writing 154 (other sub-scores 147)	162 Writing 154 (other sub-scores 154)	169 Writing 154 (other sub-scores 154)	169 Writing 162 (other sub-scores 154)
Pearson Test of English	38 Writing 38 (other sub-scores 32)	46 Writing 38 (other sub-scores 38)	50 Writing 38 (other sub-scores 38)	50 Writing 46 (other sub-scores 38)
UNSW English Language Courses	D Writing D	D+ Writing D	C Writing D	C Writing D+
O-Level English	D	C	B (O-Level) C (AS-Level)	B (O-Level) C (AS-Level)
HKDSE English	2	2 Writing 2	3 Writing 2	3 Writing 3

1 English language tests should normally have been taken within 12 months of the commencement date. The marginal rules below nominate exceptions to this rule.

2 The English language requirements may be satisfied by successful completion of full-time secondary or tertiary studies or equivalent qualification, with a duration of at least one year from an approved institution.

***IELTS:** International English Language Testing System. Tests are conducted at a number of locations around the world, including UNSW Global at UNSW in Australia.

****TOEFL:** Test of English as a Foreign Language. A TOEFL score is not acceptable without the Test of Written English (TWE) for paper-based and computer-based tests or Writing for Internet-based tests. UNSW Global is registered as a test site for the TOEFL iBT.

Marginal rules (out of date English results)

- UNSW Foundation Studies Programs will accept all IELTS results that expire within 1-month of the program start date (ie 13 months old).
- If the result is 0.5 higher than the overall program requirement, including the writing requirement, then UNSW Foundation Studies Programs will accept a result taken within 18 months of the program start date (ie 6 months after 1-year expiry date).
- If the result is 1.0 higher than the overall program requirement, including the writing requirement, then UNSW Foundation Studies Programs will accept a result taken within 24 months of the program start date (ie 12 months after 1-year expiry date).
- If the result is 1.5 higher than the overall program requirement, including the writing requirement, then UNSW Foundation Studies Programs will accept the result regardless of when the English qualification was gained or the test was taken.

UNSW UNDERGRADUATE ENTRY REQUIREMENTS

For UNSW Global pathway programs, the exit scores required for UNSW undergraduate are as follows:

UNSW entry to an undergraduate degree program requires the Grade Point Average and English requirements listed below.

CODE	BACHELOR OF	YRS	FS STREAM	UFS GPA*	ENGLISH	NOTES
Art and Design						
4803	+ Art Theory	3.0	Design	7.0	C+	
4817	+ Art Theory/Bachelor of Arts	4.0	Design	7.0	C+	
4815	+ Art Theory/Bachelor of Social Research and Policy	4.7	Design	7.0	C+	
4822	+ Design	3.0	Design	7.0	C+	
4824	+ Design/Bachelor of Media in Public Relations and Advertising	4.7	Design	7.3	C+	
4821	+ Fine Arts	3.0	Design	7.0	C+	
4823	+ Fine Arts/Bachelor of Arts	4.0	Design	7.0	C+	
4813	+ Media Arts	3.0	Design	7.0	C+	
Arts and Social Science						
3409	+ Arts	3.0	Arts/Design	7.0	C+	2
3444	+ Arts and Business	3.0	Arts/Commerce	7.5	C+	
4053	+ Arts/Bachelor of Education (Secondary)	4.0	Arts/Design	7.0	B+	2
3462	+ Commerce/Bachelor of Education (Secondary)	4.0	Commerce	8.0	B+	
3422	+ Criminology & Criminal Justice	3.0	Arts/Design	7.2	C+	
4066	+ Design/Bachelor of Education (Secondary)	4.7	Arts/Design	7.0	B+	
4058	+ Economics/Bachelor of Education (Secondary)	4.0	Commerce	7.8	B+	4
4063	+ Fine Arts/Bachelor of Education (Secondary)	4.0	Design	7.0	B+	
3447	International Studies (Majors: Asian Studies, Development Studies, European Studies, Globalisation Studies, International Business, International Relations, Language Studies)	4.0	Arts/Design	7.6	C+	
3582	International Studies/Bachelor of Media (Communication and Journalism)	5.0	Arts/Design	7.6	C+	
3577	International Studies/Bachelor of Media (Public Relations and Advertising)	5.0	Arts/Design	7.6	C+	
3477	International Studies/Bachelor of Media (Screen and Sound Production)	5.0	Arts/Design	7.6	C+	
3438	+ Media (Screen and Sound Production)	3.0	Arts/Design	7.3	C+	
4064	+ Media Arts/Bachelor of Education	4.0	Arts/Design	7.0	B+	
3454	+ Media in Communication and Journalism	3.0	Arts/Design	7.3	C+	
3453	+ Media in Public Relations and Advertising	3.0	Arts/Design	7.3	C+	
3455	Media (Communication and Journalism)/Bachelor of Arts	4.0	Arts	7.3	C+	
3487	Media (Public Relations and Advertising)/Bachelor of Arts	4.0	Arts	7.3	C+	
3479	Media (Screen and Sound Production)/Bachelor of Arts	4.0	Arts	7.3	C+	
3436	Music	4.0	Arts/Design	7.0	C+	1
3458	Music/Bachelor of Advanced Science (Honours)	6.0	Science	7.8	C+	1, 5
3452	Music/Bachelor of Arts	5.0	Arts/Design	7.0	C+	1
3460	Music/Bachelor of Commerce	5.0	Commerce	8.0	B	1, 4
3446	Music/Bachelor of Education (Secondary)	5.0	Arts/Design	7.0	B+	1
3583	Music/Bachelor of Media (Communication and Journalism)	5.0	Arts/Design	7.3	C+	
3578	Music/Bachelor of Media (Public Relations and Advertising)	5.0	Arts/Design	7.3	C+	
3464	Music/Bachelor of Media (Screen and Sound Production)	5.0	Arts/Design	7.3	C+	
3457	Music/Bachelor of Science	5.0	Science	7.3	C+	1, 9, 11, 12
3766	Music/Bachelor of Engineering (Honours)	6.7	Science (P)	7.8	C+	1, 5
3478	Politics, Philosophy and Economics	3.0	Arts/Commerce	8.0	C+	
4076	+ Science/Bachelor of Education (Secondary)	4.0	Science	7.3	B+	9
3420	+ Social Research and Policy	3.0	Arts/Design	7.0	C+	
4033	Social Work (Honours)	4.0	Arts/Design	7.0	C+	
4045	Social Work (Honours)/Bachelor of Arts	5.7	Arts/Design	7.0	C+	
4034	Social Work (Honours)/Bachelor of Criminology and Criminal Justice	5.0	Arts/Design	7.2	C+	
4044	Social Work (Honours)/Bachelor of Social Research and Policy	5.7	Arts/Design	7.0	C+	
Built Environment						
3261	Architectural Studies	3.0	Design	8.0	B	13
3362	City Planning (Honours)	4.0	Design	7.1	B	
3268	Computational Design	3.0	Design	7.0	B	
3332	Construction Management and Property	3.0	Design/Commerce	7.3	B	
3387	Industrial Design	3.0	Design	7.0	B	
3256	Interior Architecture (Honours)	4.0	Design	7.0	B	
3381	Landscape Architecture (Honours)	4.0	Design	7.0	B	

CODE	BACHELOR OF	YRS	FS	STREAM	UFS GPA*	ENGLISH	NOTES
Engineering							
3707	+ Engineering (Honours) – Aerospace Engineering, Bioinformatics Engineering, Chemical Engineering, Chemical Product Engineering, Civil Engineering, Computer Engineering, Electrical Engineering, Flexible First Year, Mechanical & Manufacturing Engineering, Mechanical Engineering, Mechatronic Engineering, Mining Engineering, Petroleum Engineering, Photovoltaics and Solar Energy, Renewable Energy Engineering, Software Engineering, Surveying, Telecommunications, Environmental Engineering	4.0	Science (P)	7.8	C+	5	
3767	+ Engineering (Honours) – Aerospace Engineering/Bachelor of Science, Bioinformatics Engineering/Bachelor of Science, Chemical Engineering/Bachelor of Science, Chemical Product Engineering/Bachelor of Science, Civil Engineering/Bachelor of Science, Computer Engineering/Bachelor of Science, Electrical Engineering/Bachelor of Science, Environmental Engineering/Bachelor of Science, Mechanical & Manufacturing Engineering/Bachelor of Science, Mechanical Engineering/Bachelor of Science, Mechatronic Engineering/Bachelor of Science, Mining Engineering/Bachelor of Science, Petroleum Engineering/Bachelor of Science, Photovoltaics and Solar Energy/Bachelor of Science, Renewable Energy Engineering/Bachelor of Science, Software Engineering/Bachelor of Science, Surveying/Bachelor of Science, Telecommunications/Bachelor of Science	5.0	Science (P)	7.8	C+	5	
3768	Engineering (Honours) – Bioinformatics Engineering/Master of Biomedical Engineering, Chemical Engineering/Master of Biomedical Engineering, Computer Engineering/Master of Biomedical Engineering, Electrical Engineering/Master of Biomedical Engineering, Mechanical Engineering/Master of Biomedical Engineering, Mechatronic Engineering/Master of Biomedical Engineering, Software Engineering/Master of Biomedical Engineering, Telecommunications Engineering/Master of Biomedical Engineering	5.0	Science (P)	7.8	C+	5	
3635	Engineering (Honours) in Civil Engineering with Architecture	4.0	Science (P)	8.0	C+	3, 5	
3961	+ Engineering (Honours)/Bachelor of Arts	5.7	Science (P)	7.8	C+	5	
3785	+ Engineering (Honours)/Bachelor of Computer Science	5.0	Science (P)	7.8	C+	5	
3773	+ Engineering (Honours)/Bachelor of Engineering Science	5.0	Science (P)	7.8	C+	5, 18	
3776	+ Engineering (Honours)/Bachelor of Surveying	5.0	Science (P)	7.8	C+	5	
3764	+ Engineering (Honours)/Commerce	5.7	Science (P)	8.0	B	5	
3736	+ Engineering (Honours)/Master of Engineering (Electrical Engineering)	5.0	Science (P)	8.2	C+	5	
3061	+ Food Science (Honours)	4.0	Science	7.8	C+	9	
3778	+ Science – Computer Science	3.0	Science (P)	7.8	C+	9	
3783	+ Science (Computer Science)/Bachelor of Arts	4.0	Science (P)	7.8	C+	9	
3791	+ Science (Computer Science)/Bachelor of Media Arts	4.0	Science (P)	7.8	C+		
3789	+ Science/Bachelor of Science (Computer Science)	4.0	Science (P)	7.8	C+	9	
Law							
4737	Actuarial Studies/Bachelor of Laws	5.0	Commerce (Maths S)	8.5	B	10, 15, 19	
3997	Advanced Science (Honours)/Bachelor of Laws	6.0	Science	8.5	B	4, 9, 10, 16, 19	
4703	Art Theory/Bachelor of Laws	5.0	Design	8.5	B	10, 19	
4783	Arts and Business/Bachelor of Laws	6.0	Arts/Commerce	8.5	B	10, 19	
4782	Arts/Bachelor of Laws	5.0	Arts/Design/Commerce	8.5	B	10, 19	
4706	City Planning (Honours)/Bachelor of Laws	6.7	Design	8.5	B	10, 19	
4733	Commerce (All Majors)/Bachelor of Laws	5.0	Commerce	8.5	B	4, 10, 19	
4763	Criminology and Criminal Justice/Bachelor of Laws	5.0	Arts/Design/Commerce	8.5	B	10, 19	
4744	Economics/Bachelor of Laws	5.0	Commerce	8.5	B	4, 10, 19	
3765	Engineering (Honours)/Bachelor of Laws	6.7	Science (P)	8.5	B	5, 10, 19	
4759	Fine Arts/Bachelor of Laws	5.0	Arts/Design	8.5	B	10, 19	
4788	International Studies/Bachelor of Laws	6.0	Arts/Design/Commerce	8.5	B	10, 19	
4792	Media (Communication and Journalism)/Bachelor of Law	5.0	Arts/Design/Commerce	8.5	B	10, 19	
4789	Media (Public Relations and Advertising)/Bachelor of Law	5.0	Arts/Design/Commerce	8.5	B	10, 19	
4752	Media (Screen and Sound Production)/Bachelor of Law	5.0	Arts/Design/Commerce	8.5	B	10, 19	
4755	Medicinal Chemistry (Honours)/Bachelor of Laws	6.7	Science	8.5	B	9, 10, 19	
4774	Music/Bachelor of Laws	6.0	Arts/Design	8.5	B	1, 10, 19	
4722	Psychological Science/Bachelor of Laws	5.0	Science	8.5	B	9, 10, 19	
4721	Psychology (Honours)/Bachelor of Laws	6.0	Science	8.5	B+	5, 10, 19	
3998	Science (Advanced Mathematics) (Honours)/Bachelor of Laws	6.0	Science	8.5	B	4, 9, 10, 16, 19	
3786	Science (Computer Science)/ Bachelor of Laws	5.0	Science (P)	8.5	B	9, 10, 19	
4772	Science and Business/Bachelor of Laws	6.0	Science	8.5	B	9, 10, 19	
4770	Science/Bachelor of Laws	5.0	Science	8.5	B	5, 10, 19	
4771	Social Research and Policy/ Bachelor of Laws	5.7	Arts/Commerce	8.5	B	10, 19	
4787	Social Work (Honours)/Bachelor of Laws	6.7	Arts/Design/Commerce	8.5	B	10, 19	

CODE	BACHELOR OF	YRS	FS STREAM	UFS GPA*	ENGLISH	NOTES
Medicine						
3871	Exercise Physiology	4.0	Science	7.4	C+	8
3805	Medical Studies/Doctor of Medicine	6.0	Science		B	3, 7, 9, 14
3856	Medical Studies/Doctor of Medicine/Bachelor of Arts	8.0	Science		B	3, 7, 9, 14
Science						
3962	+ Advanced Science (Honours) (Majors: Anatomy, Advanced Physics, Archaeology & Palaeoenvironments, Bioinformatics, Biochemistry, Biological Science, Biotechnology, Chemistry, Climate Science, Ecology, Genetics, Geosciences, Geochemistry, Marine & Coastal Studies, Mathematical Physics, Medical Microbiology & Immunology, Microbiology, Molecular Biology, Neuroscience, Pharmacology, Physical Oceanography, Physics & Astronomy, Physics & Computing, Physiology, Psychology, Vision Science)	4.0	Science	7.8	C+	9, 11, 12
3948	+ Advanced Science (Honours)/Bachelor of Arts	5.0	Science	7.8	C+	9, 11, 12
3762	+ Advanced Science (Honours)/Bachelor of Engineering (Honours)	6.0	Science (P)	7.8	C+	5
3957	+ Advanced Science (Honours)/Bachelor of Fine Arts	5.0	Science (P)	7.8	C+	5
3782	+ Advanced Science (Honours)/Bachelor of Science (Computer Science)	5.0	Science (P)	7.8	C+	5
3938	+ Advanced Science (Honours)/Bachelor of Social Research and Policy	5.7	Science	7.8	C+	9, 11, 12
3980	+ Aviation (Flying)	3.0	Science (P)	7.0	C+	6, 9, 17
3981	+ Aviation (Management)	3.0	Commerce/Science	7.0	C+	9, 10
3053	+ Biotechnology (Honours)	4.0	Science	7.3	C+	9, 11, 12
3959	+ Data Science and Decisions	3.0	Science (P)/ Commerce (Maths S)	7.7	C+	
3134	+ Engineering (Honours) (Materials Science & Engineering)/Bachelor of Commerce	5.7	Science (P)	8.0	B	5, 11
3131	+ Engineering (Honours) in Materials Science and Engineering (Majors: Physical Metallurgy, Process Metallurgy, Materials Engineering or Ceramic Engineering)	4.0	Science (P)	7.4	C+	5, 11
3132	+ Engineering (Honours) in Materials Science and Engineering/ Bachelor of Engineering Science	5.0	Science (P)	7.8	C+	5, 11
3133	Engineering (Honours) in Materials Science and Engineering/ Master of Biomedical Engineering	5.0	Science (P)	7.8	C+	5, 11
3965	+ Environmental Management	3.0	Science	7.1	C+	9
3955	+ Environmental Management/Bachelor of Arts	4.7	Science	7.1	C+	9
3966	+ Life Sciences	3.0	Science	7.0	C+	
3991	Medical Science	3.0	Science	7.6	B	9
3999	Medicinal Chemistry (Honours)	4.0	Science	7.5	C+	9
3435	+ Psychological Science	3.0	Science	7.4	B	9
3632	Psychology (Honours)	4.0	Science	8.5	B+	9
3970	+ Science (Majors: Anatomy, Bioinformatics, Biology, Biotechnology, Chemistry, Earth Science, Ecology, Food Science, Genetics, Geography, Marine Science, Materials Science, Mathematics, Mathematics for Education, Microbiology, Molecular and Cell Biology, Neuroscience, Pathology, Pharmacology, Physical Oceanography, Physics, Physiology, Psychology; Statistics, Vision Science)	3.0	Science	7.3	C+	9, 12
3949	+ Science (Advanced Mathematics) (Honours)/Bachelor of Arts	5.0	Science	7.8	C+	4, 5, 16
3761	+ Science (Advanced Mathematics) (Honours)/Bachelor of Engineering (Honours)	6.0	Science (P)	7.8	C+	4, 5, 16
3781	+ Science (Advanced Mathematics) (Honours)/Bachelor of Science (Computer Science)	5.0	Science (P)	7.8	C+	4, 5, 16
3956	+ Science (Advanced Mathematics)(Honours)	4.0	Science	7.8	C+	4, 11, 12, 16
3987	+ Science (International)	4.0	Science	7.4	C+	9, 12
3925	+ Science and Business	3.0	Science	7.5	C+	9
3947	+ Science/Bachelor of Arts	4.0	Science	7.3	C+	9
3958	+ Science/Bachelor of Fine Arts	4.0	Science (P)	7.3	C+	5
3937	+ Science/Bachelor of Social Research and Policy	4.7	Science	7.3	C+	
3181	Vision Science	3.0	Science	8.1	C+	
3182	Vision Science/Master of Clinical Optometry	5.0	Science	9.0	B	



CODE	BACHELOR OF	YRS	FS STREAM	UFS GPA*	ENGLISH	NOTES
UNSW Business School						
3586	+ Actuarial Studies	3.0	Commerce (Maths S)	8.5	B	4, 15
3155	+ Actuarial Studies/Bachelor of Commerce	4.0	Commerce (Maths S)	8.5	B	9, 15
3588	+ Actuarial Studies/Bachelor of Economics	4.0	Commerce (Maths S)	8.5	B	4, 15
3154	+ Actuarial Studies/Bachelor of Science	4.0	Science	8.5	B	4, 9, 15
3589	+ Actuarial Studies/Bachelor of Science (Advanced Mathematics) (Honours)	5.0	Commerce (Maths S)/Science	8.5	B	4, 12, 15, 16
3502	+ Commerce (All specialisations) (Majors: Accounting, Business Economics, Business Law (2nd major option only), Business Strategy & Economic Management, Finance, Financial Economics, Human Resource Management, Information Systems, International Business, Management, Marketing, Taxation and Modern Language (2nd major option only))	3.0	Commerce	8.0	B	4
3558	+ Commerce (International)	4.0	Commerce	8.2	B	4
3593	+ Commerce /Bachelor of Advanced Science (Honours)	5.0	Science (P)	8.0	B	5
3573	+ Commerce/Bachelor of Arts	4.0	Commerce	8.0	B	4
3835	+ Commerce/Bachelor of Aviation (Management)	4.0	Commerce	8.0	B	4
3575	+ Commerce/Bachelor of Design	4.7	Commerce	8.0	B	4
3521	+ Commerce/Bachelor of Economics	4.0	Commerce	8.0	B	4
3572	+ Commerce/Bachelor of Fine Arts	4.0	Commerce	8.0	B	4
3584	+ Commerce/Bachelor of Information Systems	4.0	Commerce	8.0	B	4
3596	+ Commerce/Bachelor of Media in Public Relations and Advertising	4.0	Commerce	8.0	B	4
3529	+ Commerce/Bachelor of Science	4.0	Science	8.0	B	9
3523	+ Commerce/Bachelor of Science (Advanced Mathematics) (Honours)	5.0	Commerce (Maths S)/Science	8.0	B	4
3784	+ Commerce/Bachelor of Science (Computer Science)	4.0	Commerce (Maths S)/Science	8.0	B	4
3543	+ Economics (All Majors) (Majors: Economics, Econometrics, Financial Economics; option of a second major from B.Commerce)	3.0	Commerce	7.8	B	4
3566	+ Economics/Bachelor of Advanced Science (Honours)	5.0	Commerce/Science	7.8	B	4, 9, 11, 12, 16
3564	+ Economics/Bachelor of Science (Advanced Mathematics) (Honours)	5.0	Commerce/Science	7.8	B	4, 12, 15, 16
3574	+ Economics/Bachelor of Arts	4.0	Commerce	7.8	B	4
3563	+ Economics/Bachelor of Science	4.0	Science	7.8	B	4, 9
3979	+ Information Systems	3.0	Commerce	7.5	B	4

Note On completion of Foundation Studies Australian citizens and residents must apply via the University Admissions Centre (UAC) for a Commonwealth Supported Place and the GPA requirement may be different to the ones listed in this table.

+ Entry to these programs is available twice a year.

- Applicants must complete an audition to gain entry to the Bachelor of Music program. Audition information and the online application form can be found at sam.arts.unsw.edu.au/disciplines/music/study/bachelor-of-music-auditions
- Students commencing mid-year (September) may not be able to take introductory language study in their first Term.
- Quotas apply.
- Assumed knowledge in Mathematics. Please refer to the UNSW website for more information futurestudents.unsw.edu.au/assumed-knowledge
- Assumed knowledge in Mathematics, Physics and Chemistry. Please refer to the UNSW website for more information futurestudents.unsw.edu.au/assumed-knowledge
- Interview. Please refer to the School of Aviation website for more details: aviation.unsw.edu.au/future/futureugrad.html#Bachelor Aviation – Flying Stream
- International students applying for UNSW Medicine are required to attend an interview and sit for an ISAT test isat.acer.edu.au. Australian Permanent Residents and Citizens applying for UNSW Medicine are required to attend an interview and sit for a UCAT test ucat.edu.au. For further information see med.unsw.edu.au
- Assumed knowledge in Chemistry and Mathematics. Please refer to the UNSW website for more information futurestudents.unsw.edu.au/assumed-knowledge

9 Assumed knowledge in Mathematics and Science. Please refer to the UNSW website for more information futurestudents.unsw.edu.au/assumed-knowledge

- Certain restrictions apply. Undergraduate Law programs are not available in Term 3.
- Students commencing mid-year (September) may need to take compulsory summer session studies.
- Mid-year entry into this program may mean that the degree program will take longer than the minimum time.
- Students must complete the two-year Master of Architecture degree (M.Arch, program code 8143) to be a professional Architect (subject to UNSW admission criteria).
- No set GPA is applicable to this program due to quotas and/or other requirements.
- Students wishing to take Actuarial Studies must complete Mathematics Science in the UNSW Foundation Studies program.
- A very high grade in Mathematics for Science is necessary to cope with the Mathematics courses required in the Advanced Mathematics program.
- Medical Examination: Students will need to obtain an Aviation Reference Number (ARN) from the Australian Civil Aviation Safety Authority and undertake an Australian Class 1 Medical Examination. Students can either do this either before or after enrolling in their UNSW degree program.
- This is currently only available with the following plan combinations: Civil/Mining or Civil/Environmental.
- Australian Citizens and Permanent Residents who wish to undertake a Law degree will need to sit for the Law Admissions Test (LAT). See law.unsw.edu.au/LAT for more details.

COMMUNICATION SKILLS FOR SUCCESS

ENGLISH LANGUAGE COURSES

Improve your English language skills at UNSW Global.
With a wide range of English language courses available at different levels,
lengths and for a variety of purposes, you will have the very best preparation
for academic success at UNSW, and your global career.

In addition to English language courses we provide English language testing, teacher training and
courses in a variety of other languages. We also offer study tours and customised courses.



“ The Career English course has made me feel more confident and it's easier now to talk to new people. Studying at UNSW Global has also allowed me to make friends from all over the world. ”

ANGELA, SWITZERLAND
Career English (CE)

WHY STUDY AN ENGLISH LANGUAGE COURSE AT UNSW GLOBAL?



UNSW Global English Language Courses are delivered by Australia's first university languages centre.



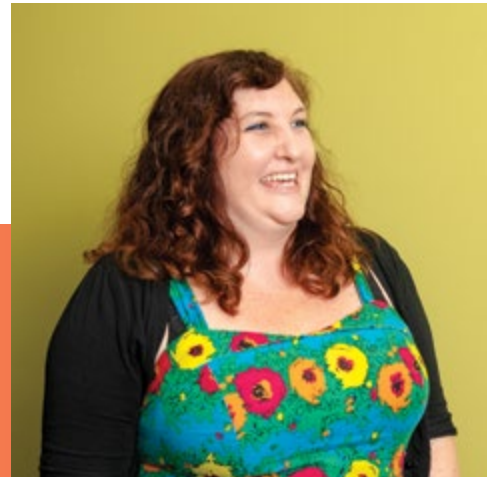
Over 50 years of excellence in language teaching.



Over 4,000 students progress through UNSW English Language Courses each year.



Classes are delivered at the UNSW Kensington and Randwick campuses, giving you access to the university facilities and its surroundings.



“ FEEC gives students the basic knowledge prior to starting their Foundation program. Students are also able to build friendships early on which they can rely on when entering university. ”

KATE RANDAZZO
Language Facilitator
English Language Courses

WHICH ENGLISH LANGUAGE COURSE IS FOR ME?

YOUR PURPOSE	ENGLISH LANGUAGE COURSE		PROGRESSION
To learn the fundamentals of English	Essential English (EE)	Page 44	Progress into further English courses such as Essential Academic English, Career English, or the Foundation English Entry Course.
To improve on your existing knowledge of English	Essential Academic English (EAE)	Page 44	Progress to the University English Entry Course.
To prepare yourself for a Foundation Studies Program	Foundation English Entry Course (FEEC)	Page 40	Progress in your studies in a UNSW Foundation Studies Program.
To prepare yourself for tertiary studies, such as a Diploma Program at UNSW, or in another English-speaking institution	University English Entry Course (UEEC)	Page 42	Progress to a Diploma or Degree Program or continue into your tertiary studies.
	Tertiary Orientation Program (TOP)	Page 44	
	Essential Academic English (EAE)	Page 44	
To learn English specific to your career	Career English (CE)	Page 44	Progress into your career in your chosen field.

English Language Courses (CRICOS Provider Code 01020K), Essential English (CRICOS Code 090804G), Essential Academic English (CRICOS Code 043923A), Foundation English Entry Course (CRICOS Code 080691E), University English Entry Course (CRICOS Code 080692D), Tertiary Orientation Program (CRICOS Code 084609E), Career English (CRICOS Code 043924M)



THE IDEAL PREPARATION FOR A UNSW
FOUNDATION STUDIES PROGRAM

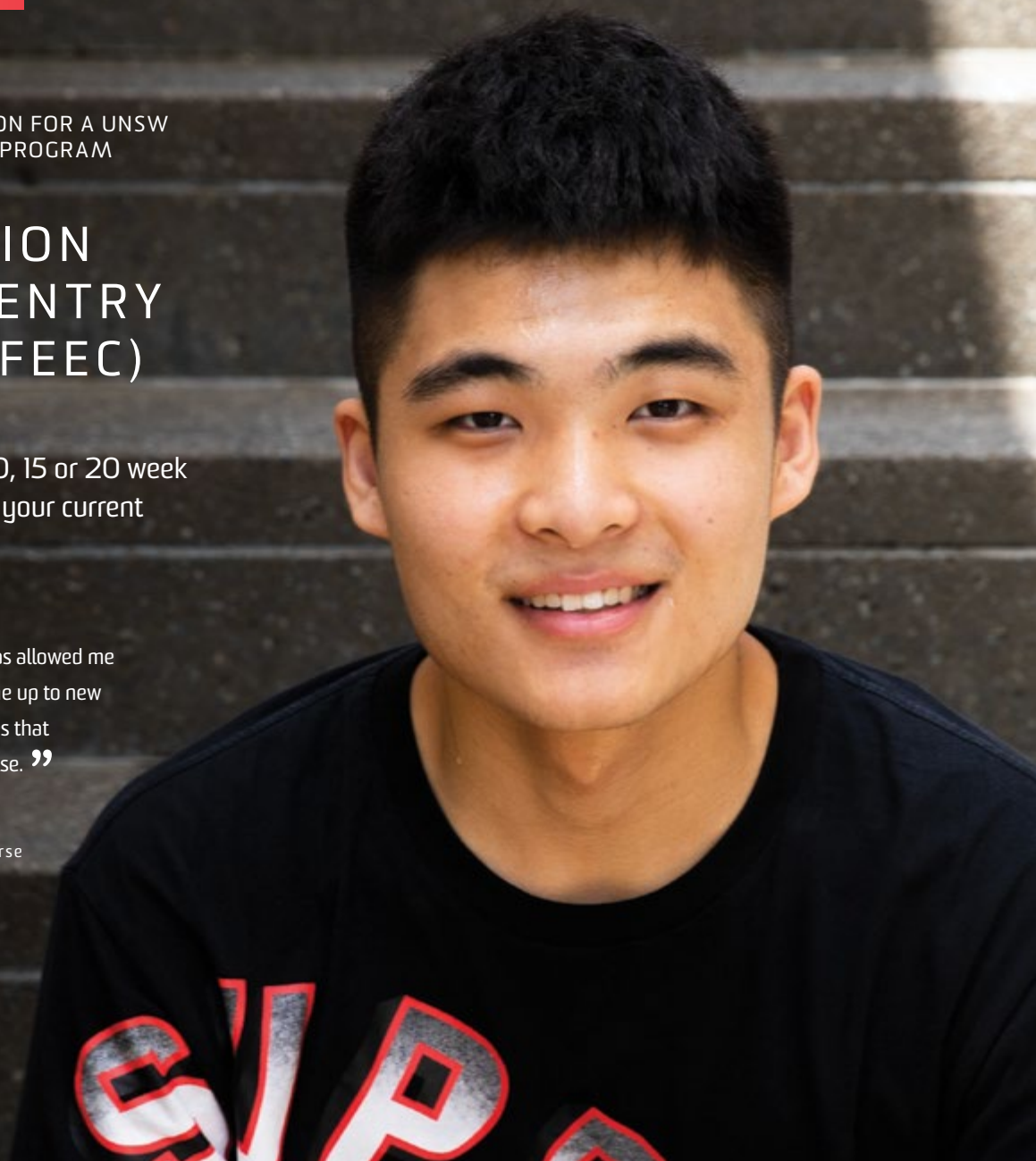
FOUNDATION ENGLISH ENTRY COURSE (FEEC)

FEEC is offered as a 10, 15 or 20 week course, depending on your current English ability.

“ Studying at UNSW Global has allowed me to study abroad and opens me up to new opportunities and experiences that I would not have had otherwise. ”

JIAQING, CHINA

Foundation English Entry Course
(FEEC)



Why study FEEC?

- Your pass grade in the FEEC course qualifies you to enter a Foundation Studies Program without another English test.
- Highly qualified and experienced teachers understand the special needs of Foundation Studies students.
- You will build a network of friends and fellow students before starting a Foundation Studies Program.

Course Content

You will develop English and academic skills you need for success in a Foundation Studies Program including:

- Presentation, discussion and group work skills
- Listening to Foundation Studies style lectures and note-taking skills
- Reading academic texts and research skills
- Academic writing
- Grammar and pronunciation
- The independent learning skills and study habits needed for success in Foundation Studies Programs.

AUD \$565 per week (2020 tuition fees)

Sample timetable available at unswglobal.unsw.edu.au/english-language-courses/feec

FEEC for entry to Foundation Studies Extended Program

ENTRY REQUIREMENTS	FEEC (10 WEEKS)	COURSE DATES AND FEES		
IELTS Academic Module	5.0, Writing 4.5	2019	2020	2021
IELTS Sub Scores	No score less than 4.5	5 Aug 19 – 11 Oct 19	6 Jan 20 – 13 Mar 20	4 Jan 21 – 12 Mar 21
TOEFL Paper Based Test PBT	483, TWE 3.5		16 Mar 20 – 22 May 20	15 Mar 21 – 21 May 21
TOEFL Internet Based Test iBT	56, Writing 12		3 Aug 20 – 9 Oct 20	2 Aug 21 – 8 Oct 21
Cambridge Advanced English	154, Writing 147	2020 fees per course (AUD \$565/week)		AUD \$5,650
Pearson Test of English	38, Writing 32			

FEEC for entry to Foundation Studies Standard Plus Program

ENTRY REQUIREMENTS	FEEC (10 WEEKS)	FEEC (15 WEEKS)	FEEC (20 WEEKS)
IELTS Academic Module	5.0, Writing 5.0	5.0, Writing 4.5	4.5, Writing 4.5
IELTS Sub Scores	No score less than 4.5	No score less than 4.5	No score less than 4.5
TOEFL Paper Based Test PBT	483, TWE 4.0	483, TWE 3.5	457, TWE 3.5
TOEFL Internet Based Test iBT	56, Writing 14	56, Writing 12	47, Writing 12
Cambridge Advanced English	154, Writing 154	154, Writing 147	147, Writing 147
Pearson Test of English	38, Writing 38	38, Writing 32	32, Writing 32

FEEC for entry to Transition and Foundation Studies Standard Programs

ENTRY REQUIREMENTS	FEEC (10 WEEKS)	FEEC (15 WEEKS)	FEEC (20 WEEKS)
IELTS Academic Module	5.5, Writing 5.0	5.0, Writing 5.0	5.0, Writing 4.5
IELTS Sub Scores	No score less than 5.0	No score less than 5.0	No score less than 4.5
TOEFL Paper Based Test PBT	513, TWE 4.0	483, TWE 4.0	483, TWE 3.5
TOEFL Internet Based Test iBT	65, Writing 14	56, Writing 14	56, Writing 12
Cambridge Advanced English	162, Writing 154 (All other sub-scores 154)	154, Writing 154	154, Writing 147
Pearson Test of English	46, Writing 38	38, Writing 38	38, Writing 32

Note For scores lower than those listed above additional English may be required

FEEC course dates and fees

2019/2020	FEEC (10 WEEKS)	FEEC (15 WEEKS)	FEEC (20 WEEKS)
For entry to Foundation Studies Standard Plus Program	14 Oct 19 – 20 Dec 19	9 Sep 19 – 20 Dec 19	5 Aug 19 – 20 Dec 19
	16 Mar 20 – 22 May 20	10 Feb 20 – 22 May 20	6 Jan 20 – 22 May 20
	25 May 20 – 31 Jul 20	20 Apr 20 – 31 Jul 20	16 Mar 20 – 31 Jul 20
	12 Oct 20 – 18 Dec 20	7 Sep 20 – 18 Dec 20	3 Aug 20 – 18 Dec 20
For entry to Foundation Studies Standard Program	5 Aug 19 – 11 Oct 19	1 Jul 19 – 11 Oct 19	27 May 19 – 11 Oct 19
	6 Jan 20 – 13 Mar 20	18 Nov 19 – 13 Mar 20	14 Oct 19 – 13 Mar 20
	25 May 20 – 31 Jul 20	20 Apr 20 – 31 Jul 20	16 Mar 20 – 31 Jul 20
	3 Aug 20 – 9 Oct 20	29 Jun 20 – 9 Oct 20	25 May 20 – 9 Oct 20
	4 Jan 21 – 12 Mar 21	16 Nov 20 – 12 Mar 21	12 Oct 20 – 12 Mar 21
	24 May 21 – 30 Jul 21	19 Apr 21 – 30 Jul 21	15 Mar 21 – 30 Jul 21
For entry to Transition Program	2 Aug 21 – 8 Oct 21	28 Jun 21 – 8 Oct 21	24 May 21 – 8 Oct 21
	14 Oct 19 – 20 Dec 19	9 Sep 19 – 20 Dec 19	5 Aug 19 – 20 Dec 19
	6 Jan 20 – 13 Mar 20	18 Nov 19 – 13 Mar 20	14 Oct 19 – 13 Mar 20
	25 May 20 – 31 Jul 20	20 Apr 20 – 31 Jul 20	16 Mar 20 – 31 Jul 20
2020 fees per course (AUD \$565/week)	6 Jan 20 – 13 Mar 20	18 Nov 19 – 13 Mar 20	14 Oct 19 – 13 Mar 20
	12 Oct 20 – 18 Dec 20	7 Sep 20 – 18 Dec 20	3 Aug 20 – 18 Dec 20
	AUD \$5,650	AUD \$8,475	AUD \$11,300

HAVE YOU RECEIVED A CONDITIONAL OFFER FROM UNSW?

UNIVERSITY ENGLISH ENTRY COURSE (UEEC)

Our University English Entry Course (UEEC) has been developed specifically for students who need to meet the UNSW English language entry requirements. You'll experience outstanding preparation for your university studies.

“ The quality and good disposition of teachers at UNSW Global make it a great place to study. The teachers are always available to help you. They have helped me acquire useful skills to improve my research performance. ”

DAVID, CHILE

University English Entry Course (UEEC)



Why study UEEC?

- Your pass grade in the UEEC qualifies you to enter UNSW without taking another English test.
- UEEC provides an outstanding preparation experience for academic study at UNSW.
- Our most recent graduating UEEC graduating class in February 2019 achieved a 90% progression rate with Business, Engineering and Arts and Social Sciences being the top three degrees our UEEC students progressed into followed by Arts and Design, Built Environment, Science, Law and Medicine.
- The course is based on authentic UNSW lectures, readings and assessment task types.

FOR THE EXIT SCORE PLEASE SEE PAGE 34 >

Course Content

You will learn to:

- Use established academic conventions
- Listen to and process authentic lectures, discussions and media reports
- Give academic presentations in your discipline
- Participate effectively and confidently in academic discussions
- Read authentic university level texts
- Produce complex academic texts, case study analyses and reports
- Use independent learning strategies.

AUD \$565 per week (2020 tuition fees)

Sample timetable available at unswglobal.unsw.edu.au/english-language-courses/ueec

UEEC for entry to UNSW undergraduate or postgraduate coursework

ENTRY REQUIREMENTS	UEEC (10 WEEKS)	UEEC (15 WEEKS)	UEEC (20 WEEKS)
IELTS Academic Module	6.0, Writing 6.0	6.0, Writing 5.5	5.5, Writing 5.5
IELTS Sub Scores	L & R ≥ 5.5, S ≥ 5.0	No score less than 5.0	No score less than 5.0
TOEFL Internet based Test IBT	80, Writing 20	75, Writing 18	65, Writing 18
TOEFL Paper based Test PBT	550, TWE 5.0	537, TWE 4.5	513, TWE 4.5
Pearson Test of English	54, Writing 54	50, Writing 50	46, Writing 46

Note Refer to table below for requirements for undergraduate and postgraduate Business, Law and Built Environment, postgraduate Arts and Social Sciences, and undergraduate Medicine.

Business, Law and Built Environment, Arts and Social Sciences postgraduate coursework and undergraduate Medicine

ENTRY REQUIREMENTS	UEEC (10 WEEKS)	UEEC (15 WEEKS)	UEEC (20 WEEKS)
IELTS Academic Module	6.5, Writing 6.0	6.0, Writing 6.0	6.0, Writing 5.5
IELTS Sub Scores	L & R ≥ 5.5	No score less than 5.0	No score less than 5.0
TOEFL Internet based Test IBT	90, Writing 23	80, Writing 20	75, Writing 18
TOEFL Paper based Test PBT	577, TWE 5.0	550, TWE 5.0	537, TWE 4.5
Pearson Test of English	64, Writing 54	54, Writing 54	54, Writing 46

Note For each 0.5 band in Listening, Reading or Speaking subscore below the requirement, add 5 weeks.

Business and Law postgraduate research programs

ENTRY REQUIREMENTS	UEEC (10 WEEKS)	UEEC (15 WEEKS)
IELTS Academic Module	6.5, Writing 6.5	6.5, Writing 6.0
IELTS Sub Scores	L, R, S ≥ 6.0	No score less than 5.5
TOEFL Internet based Test IBT	90, Writing 25	90, Writing 23
TOEFL Paper based Test PBT	577, TWE 5.5	577, TWE 5.0
Pearson Test of English	64, Writing 58	64, Writing 54

UEEC dates and fees

2019/2020/2021	UEEC (10 WEEKS)	UEEC (15 WEEKS)	UEEC (20 WEEKS)
For entry into UNSW Term 1, Feb 2020	14 Oct 19 – 20 Dec 19	9 Sep 19 – 20 Dec 19	5 Aug 19 – 20 Dec 19
	18 Nov 19 – 7 Feb 20	14 Oct 19 – 7 Feb 20	9 Sep 19 – 7 Feb 20
For entry into UNSW Term 2, Jun 2020	10 Feb 20 – 17 Apr 20	6 Jan 20 – 17 Apr 20	18 Nov 19 – 17 Apr 20
	16 Mar 20 – 22 May 20	10 Feb 20 – 22 May 20	6 Jan 20 – 22 May 20
For entry into UNSW Term 3, Sep 2020	25 May 20 – 31 Jul 20	20 Apr 20 – 31 Jul 20	16 Mar 20 – 31 Jul 20
	29 Jun 20 – 4 Sep 20	25 May 20 – 4 Sep 20	20 Apr 20 – 4 Sep 20
For entry into UNSW Term 1, Feb 2021	12 Oct 20 – 18 Dec 20	7 Sep 20 – 18 Dec 20	3 Aug 20 – 18 Dec 20
	16 Nov 20 – 5 Feb 21	12 Oct 20 – 5 Feb 21	7 Sep 20 – 5 Feb 21
For entry into UNSW Term 2, May 2021	8 Feb 21 – 16 Apr 21	4 Jan 21 – 16 Apr 21	16 Nov 20 – 16 Apr 21
	15 Mar 21 – 21 May 21	8 Feb 21 – 21 May 21	4 Jan 21 – 21 May 21
For entry into UNSW Term 3, Sep 2021	24 May 21 – 30 Jul 21	19 Apr 21 – 30 Jul 21	15 Mar 21 – 30 Jul 21
	28 Jun 21 – 3 Sep 21	24 May 21 – 3 Sep 21	19 Apr 21 – 3 Sep 21
2020 fees per course (AUD \$565/week)	AUD \$5,650	AUD \$8,475	AUD \$11,300

Note Refer to page 21 for Optional English courses for entry into UNSW Diploma Programs.

Tertiary Orientation Program (TOP)

Make a smooth transition to university with our Tertiary Orientation Program.

This 5-week English course is for students who have received a full offer from UNSW, but who want to hone their English language skills to maximise success at university.

2020 Fees per course AUD \$2,825

Sample timetable available at unswglobal.unsw.edu.au/english-language-courses/tertiary-orientation-program

TOP 5-WEEK COURSE DATES

For entry to UNSW Term 1, 2020	6 January 2020 – 7 February 2020
For entry to UNSW Term 2, 2020	20 April 2020 – 22 May 2020
For entry to UNSW Term 3, 2020	3 August 2020 – 4 September 2020
For entry to UNSW Term 1, 2021	4 January 2021 – 5 February 2021
For entry to UNSW Term 2, 2021	19 April 2021 – 21 May 2021
For entry to UNSW Term 3, 2021	2 August 2021 – 3 September 2021

Essential Academic English (EAE)

Build the vital English skills you need to thrive at university. Essential Academic English prepares you for the University English Entry Course (UEEC).

Essential Academic English provides the pathway to your future success in the University English Entry Course or IELTS Test Preparation.

2020 Fees per course AUD \$5,650

Sample timetable available at unswglobal.unsw.edu.au/english-language-courses/essential-academic-english

EAE 2020 DATES

6 January 2020 – 13 March 2020
10 February 2020 – 17 April 2020
25 May 2020 – 31 July 2020
29 June 2020 – 4 September 2020
12 October 2020 – 18 December 2020

Essential English (EE)

Learn to communicate effectively in English. Essential English provides the basic English skills you need for all social, academic and work situations, with a focus on written and spoken fluency.

The Essential English course is the starting point for students who want to progress into FEEC and UEEC courses to prepare themselves for university entry. Essential English leads directly to Career and Professional English courses.

Sample timetable available at unswglobal.unsw.edu.au/english-language-courses/essential-english

EE AND CE 2020 5-WEEK COURSE DATES

6 January 2020 – 7 February 2020	29 June 2020 – 31 July 2020
10 February 2020 – 13 March 2020	3 August 2020 – 4 September 2020
16 March 2020 – 17 April 2020	7 September 2020 – 9 October 2020
20 April 2020 – 22 May 2020	12 October 2020 – 13 November 2020
25 May 2020 – 26 June 2020	16 November 2020 – 18 December 2020

Career English (CE)

Develop the English skills you need to improve your career prospects and communicate effectively in any workplace situation.

This 5-week to 43-week course is structured in five-week modules to suit your ability, from intermediate to advanced levels (CEFR B2.1–C1.2).

2020 Fees per term AUD \$2,300

Sample timetable available at unswglobal.unsw.edu.au/english-language-courses/career-english

Other UNSW Global additional fees in Australian dollars (AUD)

DESCRIPTION	PAYABLE	AMOUNT
Enrolment fee	Payable on Acceptance of Offer.	AUD \$300
Administration fee	Payable for all withdrawals and transfers; and for change of class/stream more than once.	AUD \$300
Late payment fee	Payable when a payment is not made by its due date.	AUD \$300
Care arrangements/ Guardianship fee	Is payable by those under 18 students seeking UNSW Global to approve their care arrangements and issue them with a CAAW Letter (confirmation of accommodation and welfare letter).	AUD \$150
Under 18 monitoring fee	Is payable for students that are under 18 years of age and have been issued a CAAW letter by UNSW Global. The monitoring fee is payable for the period specified in the CAAW.	AUD \$49 per week
Airport pick-up fee	Is payable for all students who book an airport pick-up through UNSW Global.	AUD \$150
Overseas Students Health Cover (OSHC)	Is payable by all overseas students on a student visa. The amount payable for OSHC is calculated by the length of your proposed enrolment period. Please contact Student Services to determine actual cost.	AUD \$TBC

Note Minimum living costs in Sydney are approximately AUD\$22,000 per year. No additional application, laboratory or library fees.

Note Additional 2020 fees to be confirmed.

STUDY TOURS AND CUSTOMISED PROGRAMS

Study Tours and Customised Programs at UNSW Global offers participants the unique opportunity to develop English Language communication skills in a range of areas, whilst also providing participants with the opportunity to engage and develop an intercultural understanding.



TAKUSHOKU LONG STAY STUDENTS

SAMPLE EXPERIENCES

Integrated Program Experience

An integrated experience offers students the chance to engage with and study in our regular UNSW Global English Courses timetable. Students are placed according to their level of English and offered suggested study pathways.

Suitable for

University Students, Professionals, Language Teacher Trainers

Duration

4–30+ weeks

Closed Group Experience

A closed group experience offers students the chance to study in private classes. This option is suitable for students who need to meet specific program demands but still want the campus experience.

Suitable for

High School students, University students, Professionals, Language Teacher Trainers

Duration

1–3 weeks

Blended Experience

The blended experience is a blend of both the integrated program experience and the closed group experience. This option is suitable for students who would benefit from being placed into our integrated UNSW English Language Courses terms but also require a closed program elements.

Suitable for

High School students, University students, Professionals, Language Teacher Trainers

Duration

4–30 weeks



“ I’ve really enjoyed meeting new people from different countries and the great excursions that we go on during the course. ”

GINO, PERU
Career English (CE)



EXPERIENCE STUDENT LIFE AT UNSW GLOBAL

When you are a UNSW Global student, you're connected to the wider UNSW community: active, vibrant and diverse.

You'll love studying at UNSW Global. Our classes are held at UNSW Kensington and Randwick campuses, conveniently located close to the main UNSW campus and a short bus ride from some of Sydney's famous beaches, parks, shopping centres and the CBD.

Arriving in Sydney

Upon arriving at Sydney airport, you'll have the option to be met by a driver at the airport and be driven to your accommodation. This Airport Pickup service is available to book as soon as you have accepted your program offer. (For more information on pricing, please see page 21, 31 or 44.)

To begin your Sydney experience, you may wish to join our Sydney Basics Tour – a guided tour around beautiful Sydney city and Sydney harbour.

Orientation Day

Your first day at UNSW Global is your Orientation Day. On this day, you will receive your student card, class timetable and learn more about your student life in Sydney. You will also enjoy a lunch with your new classmates, meet teachers and be taken on a UNSW campus tour by our Global Student Volunteers – that is, current students who are very excited to meet you!

Your Study

At UNSW Global, we focus on 'blended learning': a combination of face-to-face teaching and online resources and support. Our campuses are Wi-Fi enabled, so you can access our learning technologies anytime, anywhere, with your own personal device, whether it be a notebook, tablet or smartphone. You will also have access to outstanding libraries and computer lab facilities.

On campus, you'll find a variety of courses to help support, practise and improve your academic and English language skills. This is available through our Learning Support Unit (LSU), course-specific consultations, Study Club, workshops with teachers, and our popular 'Conversation Club', where you can practise your English skills.



Student Services and Engagement

Our Student Services staff are here to answer your enquiries and support you throughout your UNSW Global journey. Whether you have a personal or academic issue, our Student Advisers are available to meet with you individually. And if you need to discuss anything related to homestay or accommodation, a member of our Accommodation team is ready to help.

When you're a UNSW Global student, you are studying on the UNSW campus with over 60,000 other UNSW students and at the heart of an active, vibrant, and diverse student community.

Make local and international friends by joining Arc – UNSW's student association. As an Arc member, you'll have access to over 250 student clubs and societies, practise your hobbies and connect with other students who share the same interests.

Our student engagement team also organise events specifically for our students. You can take part in a wide range of activities, such as an introductory tour of Sydney, a student excursion to popular Sydney attractions, sporting events, cultural events and our annual student talent night.

Health Services

As a member of the UNSW community, you will have access to medical and dental services at UNSW Health Services, and free, confidential consultations at UNSW Counselling and Psychological Services (CAPS).

“ I chose to study at UNSW Global as it offers a range of facilities from different social clubs to study groups and the staff at UNSW Global really make you feel welcome and involved. ”

FATIMA, AUSTRALIA
Foundation Studies
Standard Program,
Commerce



For more information visit
unswglobal.unsw.edu.au/student-support

YOUR HOME AWAY FROM HOME

STUDENTS UNDER 18 YEARS OF AGE



Your safety is our first priority. UNSW Global is one of Australia's most experienced providers of education and care to international students who are under 18 years of age.

Your accommodation options

International students under 18 years of age must have appropriate accommodation and welfare arrangements in place before they can be granted a student visa.

When you study at UNSW Global, you have two accommodation options to choose from:

1. You can live in Sydney with your parent/legal guardian or another relative in Sydney who agrees to take care of you. If you decide to live with a relative, your parent/legal guardian must first nominate the relative through a formal process with the Department of Home Affairs (DHA).

2. You can live in UNSW Global approved accommodation, under additional supervision and care by our Accommodation team. If you are under 18 years of age and not living with your parent/legal guardian or a relative (approved by the DHA), you must apply for a Care Arrangement from UNSW Global.

After careful consideration of your application, UNSW Global will issue a Confirmation of Appropriate Accommodation and Welfare (CAAW) letter, confirming that we approve your accommodation and will provide welfare support and care through ongoing monitoring. Once you have your CAAW letter, you can apply for your Student Visa.

Your Confirmation of Appropriate Accommodation and Welfare

If you are issued with CAAW by UNSW Global, you must live in UNSW Global approved accommodation. Our Accommodation teams have carefully selected accommodation options for students under 18 years of age, ensuring systems and processes are in place for your safety and security.

Your CAAW Approved Accommodation

You must pay for your accommodation and have it confirmed before you can apply for a CAAW letter. Please submit proof of your accommodation arrangements and send it with your CAAW request form.¹ At the time of the printing of this Guide, Under 18 Approved Accommodation options include:

- Student residence accommodation: UniLodge@UNSW, UniLodge on Broadway, Urbanest Darling House, Darling Square and SCAPE Abercrombie.
- A selection of UNSW Global approved homestay providers.²

¹ For more information about Under 18 Care, including the CAAW Request Form, visit unswglobal.unsw.edu.au/application/under-18

² For more information about Under 18 Approved Accommodation, including homestay providers, visit unswglobal.unsw.edu.au/application/under-18



UNDER 18 STUDENT CARE PROGRAM

We understand that parents need to know that their children will be well supported and cared for while they are studying overseas.

We work together with students, parents, teachers, accommodation providers and other professional support services to deliver a standard of care that best supports students' study, safety, accommodation and welfare needs.

Our Student Support team is highly trained in the unique needs of younger students. Our Student Advisers follow a specifically designed care program to ensure that our under 18 students have the best possible experience in Australia.



The UNSW Global Under 18 Student Care Program

As a parent, you'll receive:

- Parent Information Sessions, delivered in English and Mandarin by our Student Advisers.
- Liaison with you regarding your child's academic progress, attendance and personal welfare. If your child is enrolled in a Foundation Studies, Transition or Diploma Program, the Term 1 results will be sent to you along with a progress report from a Student Adviser.
- If your child is not living with you or a Department of Home Affairs approved relative, your child's well-being and safety will be closely monitored with our approved accommodation partners.

As a student, you'll experience:

- A customised Under 18 Orientation program, including specialised workshops to help you settle into your new study and home life.
- Regular one-on-one Student Adviser consultations, where you can personally discuss issues related to your enrolment, personal welfare and accommodation.
- Close monitoring of your academic progress and attendance, including liaison with teachers.
- Access to UNSW services, including Counselling and Psychological Services, UNSW social and student clubs and relevant events.

For more information, contact
student.support@unswglobal.unsw.edu.au



MORE ACCOMMODATION CHOICES THAN EVER

There are many different types of accommodation in Sydney. Whatever type of accommodation you prefer, we recommend you start applying for your chosen accommodation as soon as possible to help you get your first preference.

Accommodation at UNSW (18+ only)

COLLEGES

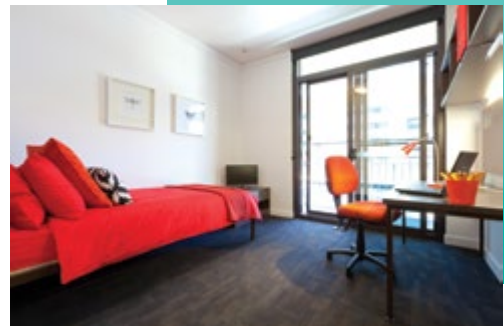
Colleges provide a choice of full board, partly catered, and self-catered accommodation. There is also a range of gender-specific options including male only, female only, and mixed male and female accommodation. Most colleges cater for dietary requirements like halal, kosher and vegetarian.

APARTMENTS

Apartments offer more of an independent style of living. There are apartments on and off campus and costs vary depending on the number of rooms and the location.

You should organise your university accommodation early as places book up quickly.

For more information visit accommodation.unsw.edu.au



Student accommodation options for under 18s off campus

Unilodge @UNSW, Urbanest Darling Square and Urbanest Darling House, Scape, Unilodge on Broadway and homestay are all great accommodation options for university students of all ages.

UNILODGE

Unilodge@UNSW is specifically designed for UNSW Global students under 18 years of age. Unilodge@UNSW is a great option if you want a supported introduction to independent living, right next to UNSW.

For more information visit unilodge.com.au/unilodge-unsw



URBANEST

Urbanest one of Australia's largest student accommodation providers. Urbanest provides accommodation to UNSW Global under 18 students in Sydney, who can apply to stay at the Darling Square, Darling House and Quay Street properties.

For more information visit urbanest.com.au/sydney

SCAPE

Scape is one of the newest student residences in Sydney and centrally located in Darlington. Its boutique – style accommodation is nestled near the city with an urban vibe.

For more information visit scape.com/en-au/student-accommodation/sydney

UNILODGE

Unilodge on Broadway is an approved accommodation provider for UNSW Global Under 18 students. Located next to a shopping mall, Unilodge on Broadway is an easy bus ride to UNSW.

For more information visit unilodge.com.au/unilodge-on-broadway-sydney

HOMESTAY (ALL AGES)

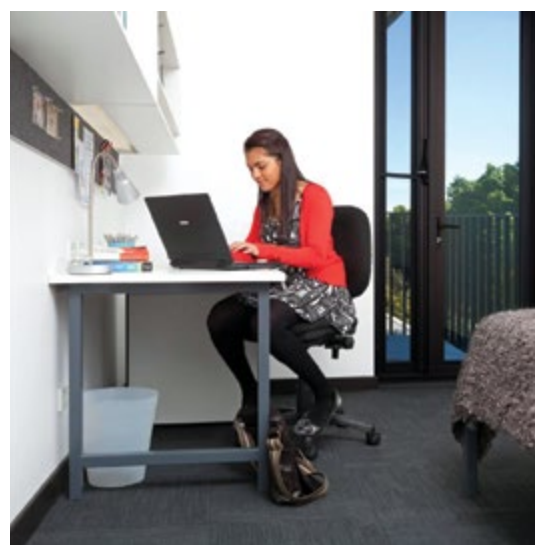
Homestay is a good option if you want to immerse yourself in local culture by living with Australians.

To view UNSW Global approved homestay providers, visit unswglobal.unsw.edu.au/accommodation

Other accommodation options

Private rental accommodation (18+ only) – There are many private rental properties in the suburbs surrounding UNSW. If you are thinking about renting in Sydney, here are some things to think about. What type of housing would you like to live in? How many people would you like to live with? How much do you want to pay each week?

For accommodation enquiries and assistance, please contact accommodation@unswglobal.unsw.edu.au



	CONFIGURATION	CATERING	INTERNET	PRIVATE BATHROOM (ENSUITE)	WEEKLY RATE (2019)
UNSW Managed Colleges (18 + only)					
The Kensington Colleges Basser, Philip Baxter and Goldstein	Single rooms	Fully catered – 19 meals per week	Wi-Fi	Ensuite in some rooms, shared unisex for others	AUD \$523.65 (shared bathroom) AUD \$577.45 (ensuite room)
Colombo House	Single rooms	Self-catered	Wi-Fi	Yes	AUD \$420.10
Fig Tree Hall	Single rooms	Fully catered – 19 meals per week	Wi-Fi	Yes	AUD \$576.95
UNSW Hall	Single rooms	Part catered – breakfast & dinner	Wi-Fi	No – shared unisex	AUD \$382.55
International House	Single rooms	Fully catered – 19 meals per week	Wi-Fi	No – shared unisex	AUD \$280.20
Affiliated Colleges (18 + only)					
Shalom College	Single rooms	Fully catered – 19 meals per week	Wi-Fi	Ensuite rooms and rooms with shared single sex bathrooms available	AUD \$473 (shared bathroom) AUD \$543 (ensuite room)
New College	Single rooms	Fully catered – 21 meals per week	Wi-Fi & wired	Private ensuite bathroom in some rooms shared single sex bathrooms for others	AUD \$451 (shared bathroom) AUD \$507 (ensuite room)
Creston College	Single rooms	Fully catered – 21 meals per week	Wi-Fi	Private ensuite bathroom in some rooms shared bathrooms for others	AUD \$400 (shared bathroom) AUD \$435 (ensuite room)
Warrane College	Single rooms	Fully catered – 21 meals per week	Wi-Fi & wired	Shared bathroom	AUD \$399 – AUD \$600 per student
Under 18 accommodation					
Urbanest Darling Square	Twin share studio, twin ensuite room, single ensuite room, large studio	Self-catered	Wi-Fi	Ensuite bathrooms in some rooms, shared bathrooms for others	AUD \$379 – AUD \$669 per student
Urbanest Darling House	Twin share or private studio	Fully catered – 21 meals per week	Wi-Fi	Ensuite bathrooms in some rooms, shared bathrooms for others	AUD \$575 – AUD \$665 per student
Scope (all ages) Location – Darlington	Studio apartments and 2-bedroom apartments	Self-catered	Wi-Fi	Ensuite bathrooms in some rooms, shared bathrooms for others	AUD \$449 – AUD \$639 per student
Unilodge at UNSW (all ages)	Studio apartments, 2 – 5 bedroom apartments	Self-catered	Wi-Fi & wired	Ensuite bathrooms in some rooms, shared bathrooms for others	AUD \$421 – AUD \$553 per student
Unilodge on Broadway (all ages)	Studio apartments, twin apartments	Self-catered	Wi-Fi & wired	Yes	From AUD \$405 per apartment
On campus apartments (18+ only)					
Barker Street Apartments	Studio, 2-, 3- and 5-bedroom apartments.	Self-catered	Wi-Fi	Ensuite bathrooms in some rooms, shared bathrooms for others	From AUD \$326.90 per student
University Terraces	Studio and 1-bedroom apartments	Self-catered	Wi-Fi	Yes	AUD \$417.50 – AUD \$537.30 per apartment
Mulwarree Apartments	5-bedroom apartments	Self-catered	Wi-Fi	No – shared unisex	AUD \$292.40 per student
High Street family option	1- and 2-bedroom apartments	Self-catered	Wi-Fi	Yes	From AUD \$476.90 per apartment
New College Village	Single-room apartments and studios	Optional catering	Wi-Fi & wired	Yes	AUD \$391 per apartment, AUD \$430 per studio
UNSW Village	1-bedroom studios and 1 – 8-bedroom apartments	Self-catered	Wi-Fi & wired	Ensuite bathrooms in some rooms, shared unisex bathrooms for others	AUD \$296.20 – AUD \$466.20 per student
Privately owned					
Private rental accommodation (18+ only)	Private rental accommodation (18 + only) Costs for private rentals will vary according to the number of bedrooms, the condition, and location. Costs vary but usually range from AUD \$150 – AUD \$300 per student per week in a shared house or apartment.				
Homestay (all ages – under 18)	Homestay options include full board and single room only accommodation. Full board usually includes a furnished room, use of facilities in the private home of a family or a single person, plus breakfast and dinner. Single room only homestays includes a furnished room, and gas and electricity expenses in the rent. Costs vary but usually range from AUD \$250 – AUD \$350 per student per week. Search our database of locally listed private proprietries at studystays.unsw.edu.au				



Living on campus compared to living off campus

	INDEPENDENT		UNSW OWNED AND/OR AFFILIATED	
	Share house	One bedroom	UNSW apartment	UNSW College
Set-up costs Bond, furniture, utility connections etc.	AUD \$3,000	A\$3,700	\$0	\$0
Accommodation per week	AUD \$250 to AUD \$350	AUD \$470 to AUD \$650	AUD \$390*	AUD \$445*
Internet and phone	AUD \$20 to AUD \$55	AUD \$20 to AUD \$55	\$0	\$0
Gas and electricity	AUD \$35 to AUD \$140	AUD \$35 to AUD \$140	\$0	\$0
Food (groceries and eating out)	AUD \$80 to AUD \$280	AUD \$80 to AUD \$280	AUD \$80 to AUD \$280	AUD \$10 to AUD \$50
Public Transport	AUD \$15 to AUD \$55 per week	AUD \$15 to AUD \$55 per week	\$0	\$0
Average weekly total	AUD \$425 to AUD \$865	AUD \$645 to AUD \$1,165	AUD \$470 to AUD \$670	AUD \$455 to AUD \$495
Total annual cost	AUD \$22,100 to \$44,980*	AUD \$33,540 to \$60,580*	AUD \$24,440 to A\$34,840*	AUD \$20,020 to \$21,780*

* Costs will vary depending on the type of accommodation and the catering offered.

Note Living costs are indicative only and will vary based on the location, number of people you live with and the condition of housing.

HOW TO APPLY

For information concerning student visas to Australia please refer to the Department of Home Affairs (DHA) website homeaffairs.gov.au

Further information on how to apply for admission to a UNSW Global program can be obtained from our website unswglobal.unsw.edu.au/how-to-apply



Step 1

To apply direct visit apply.unswglobal.unsw.edu.au (online applications are assessed quicker)

OR

Complete the application form in the guide along with the supporting documents outlined in **Step 2** and lodge with a UNSW Global Representative in your country or email to admissions@unswglobal.unsw.edu.au



Step 2

Attach certified copies of the following documents:

- Your academic qualifications (translated into English)
- Evidence of English language proficiency (if applicable)
- Your passport, visa or birth certificate (if available).

If you are under 18, there are additional document requirements. For more details visit unswglobal.unsw.edu.au/application/under-18



Step 3

Submit your application online at apply.unswglobal.unsw.edu.au, by email, or through a UNSW Global Representative in your country.



Step 4

Your application will be reviewed for eligibility and you will be notified in writing of the outcome.

UNSW Global Application Form



Before completing the application form, please visit the relevant sections of the Student Guide for the Academic and English requirements: Diploma Programs **pages 24–25**, Foundation Studies Programs **pages 32–33** and English Language Courses **pages 41–43**.

You can also apply through our online application form.

1. Personal details (as in passport)*

Given Names:		
Family Name:	Gender:	<input type="checkbox"/> Male <input type="checkbox"/> Female <input type="checkbox"/> Other
Date of Birth (dd/mm/yyyy): / /	Country of Birth:	Will you be under 18 on arrival <input type="checkbox"/> Yes <input type="checkbox"/> No
Nationality:	Passport No:	

Please note: If you are an international student and under 18 years of age on commencement of study, certain visa conditions apply.

2. Citizenship and Visa

Please select your citizenship status:	<input type="checkbox"/> Australian Citizen*	<input type="checkbox"/> Australian Permanent Resident or New Zealand Citizen*
	<input type="checkbox"/> Australian Temporary Resident*	<input type="checkbox"/> International Student**
What type of visa are you applying for:	<input type="checkbox"/> Student <input type="checkbox"/> Other:	
Have you been refused an entry visa to Australia or any country?	<input type="checkbox"/> No <input type="checkbox"/> Yes (If yes, please attach evidence)	

*Please attach evidence of Australian Citizenship/Permanent Residency status. **Please attach a certified copy of the first page of your passport which shows your photograph. All international students on a Student visa will need Overseas Student Health Cover (OSHC). This can be arranged by UNSW Global in section 14.

3. Emergency Contact Details

(For students under 18 years of age, please put your parent's details here. For other students, you may choose either a parent or another emergency contact person – not your agent)

First Name:	Family Name:	Relationship:
Telephone: (include country/area code)	Mobile: (include country/area code)	Email:

4. Home/ Correspondence address (of student)

Address:	City:	
State/Province:	Country:	Postcode:
Email:		
Home Phone: (include country/area code)	Mobile Phone: (include country/area code)	

5. Agent Information

Are you applying through an agent? <input checked="" type="checkbox"/> Yes <input type="checkbox"/> No	Agency Name: GLF Education Consulting Ltd.
Branch Address: 1809 326-1 Huan Shi Dong Rd Yuexiu Guangzhou 510060 China	
Agent Contact Name: John Zhang	Agent Email: info@glf.org.cn

6. Previous Study (only for Foundation Studies, Transition Program and Diploma)

Name of Qualification*:		
Completion date: / /	Name of Institution:	Country:

*Please attach certified copies of your academic qualifications

7. Course selection

<input type="checkbox"/> Foundation Studies (please complete question 7 & 8)	<input type="checkbox"/> UNSW Diploma (please complete question 7 & 9)	<input type="checkbox"/> English Language Course only (please complete question 10)
---	---	--

8. Please select a Foundation Studies or Transition Program (if applicable)

Preferred Program:	<input type="checkbox"/> Extended (15 months)	<input type="checkbox"/> Standard Plus (12 months)	<input type="checkbox"/> Standard (9 months)	<input type="checkbox"/> Transition (4 months)
If you are not eligible for your preferred program, we will offer you the Foundation Studies or Transition program that best suits your qualification.				
Preferred Stream:	<input type="checkbox"/> Physical Science	<input type="checkbox"/> Life Science [#]	<input type="checkbox"/> Commerce	<input type="checkbox"/> Commerce Actuarial
	<input type="checkbox"/> Design*	<input type="checkbox"/> Fine Arts* [^]	<input type="checkbox"/> Arts/Social Sciences*	<input type="checkbox"/> International Studies* [^]

*Not available for Transition. #Not available in August 2019. ^Not available from 2020. To help you choose the preferred stream for your Foundation Studies or Transition program that matches best to your UNSW degree preference, please check our website at unswglobal.unsw.edu.au/foundation

Preferred intake:	<input type="checkbox"/> Next available date	<input type="checkbox"/> Date: / /	(please refer to Academic Calendar in the Student Guide or website at unswglobal.unsw.edu.au/foundation)
Intended UNSW Undergraduate Degree Preference:			
Course Name:	UNSW Course Code:		

NOTE: Students applying for Foundation Studies or Transition should submit an English test result. If your English test results do not meet the English Language requirements, we will give you a packaged Foundation Studies or Transition offer that includes Foundation English Entry Course (FEEC), as well as Essential English courses (if required).

9. Please select a UNSW Diploma program (if applicable)

Diploma (select ONE)	Degree you wish to pursue (select ONE)
<input type="checkbox"/> Engineering <small>** Go to the website or Handbook and select your choices</small>	<input type="checkbox"/> Aerospace# <input type="checkbox"/> Bioinformatics <input type="checkbox"/> Chemical# <input type="checkbox"/> Chemical Product Engineering# <input type="checkbox"/> Civil* <input type="checkbox"/> Computer Engineering <input type="checkbox"/> Electrical <input type="checkbox"/> Environmental* <input type="checkbox"/> Manufacturing <input type="checkbox"/> Mechanical <input type="checkbox"/> Materials Science and Engineering <input type="checkbox"/> Mechatronic <input type="checkbox"/> Mining* <input type="checkbox"/> Petroleum**# <input type="checkbox"/> Photovoltaics# <input type="checkbox"/> Renewable Energy# <input type="checkbox"/> Telecommunications Option# and/or Elective*:
<input type="checkbox"/> Science	<input type="checkbox"/> Anatomy <input type="checkbox"/> Biology <input type="checkbox"/> Chemistry <input type="checkbox"/> Food Science <input type="checkbox"/> Genetics <input type="checkbox"/> Marine Science <input type="checkbox"/> Materials Science <input type="checkbox"/> Mathematics <input type="checkbox"/> Microbiology <input type="checkbox"/> Molecular & Cell Biology <input type="checkbox"/> Pathology <input type="checkbox"/> Pharmacology <input type="checkbox"/> Physical Oceanography <input type="checkbox"/> Physics <input type="checkbox"/> Physiology <input type="checkbox"/> Statistics
Preferred intake: <input type="checkbox"/> Next available Date <input type="checkbox"/> Date: / /	*Please refer to the Program Start Dates on the website at unswglobal.unsw.edu.au/diploma

NOTE: Students applying for a UNSW Diploma should submit an English test result. If your English test results do not meet the English Language requirements, we will give you a packaged UNSW Diploma offer that includes University English Entry Course (UEEC), as well as Essential Academic English courses and Essential English courses (if required).

10. Please select English Language Course(s) (if applicable)**

**Note: Foundation Studies and Diploma applicants who have met the English requirements do NOT need to complete this section. Students applying for UEEC to be packaged with the UNSW degree program must submit their UNSW conditional offer and English test result. Depending on your English test result, we will issue you with an English offer that may also include Essential Academic English courses and Essential English courses (if required).

Academic English:	<input type="checkbox"/> University English Entry Course (UEEC) <input type="checkbox"/> Tertiary Orientation Program (TOP)	<input type="checkbox"/> Foundation English Entry Course (FEEC) <input type="checkbox"/> Essential Academic English (EAE)
Start date: / /	*Please refer to the Program Start Dates on the website at unswglobal.unsw.edu.au/english-language-courses	
Other English:	<input type="checkbox"/> Career English	<input type="checkbox"/> Essential English
Start date: / /	*Please refer to the Program Start Dates on the website at unswglobal.unsw.edu.au/english-language-courses	

ALL APPLICANTS MUST COMPLETE QUESTIONS 11-16

11. English Proficiency

Have you taken an IELTS, TOEFL or other recognised English Proficiency test?*

*Your test must have been taken within 12 months (or 24 months if applying for Diploma programs) before the official commencement date of your course

<input type="checkbox"/> Yes. Please attach a certified copy of your English test results or in the case of IELTS, provide the IELTS TRF number.
<input type="checkbox"/> No. A conditional Foundation Studies or Diploma offer will be issued until the English Language Requirements have been met.

12. Scholarship

Have you been granted a scholarship: <input type="checkbox"/> Yes <input type="checkbox"/> No	Scholarship Name or Sponsor Name:
---	-----------------------------------

13. Airport Pick Up

Do you want to be picked up by a UNSW Global approved driver when you arrive at Sydney airport? Our airport pickup fee is AUD150. <input type="checkbox"/> Yes <input type="checkbox"/> No
--

14. Overseas Student Health Cover (OSHC)

UNSW Global can arrange visa-length health cover with Medibank, our preferred provider of OSHC. If you want UNSW Global to purchase OSHC on your behalf, your personal information will be disclosed to Medibank, in accordance with our Privacy Policy for the purpose of arranging your OSHC. You must maintain OSHC for the proposed length of your student visa.

<input type="checkbox"/> Yes, I want UNSW Global to purchase OSHC on my behalf	<input type="checkbox"/> No, I will make my own OSHC arrangements
YES:	<input type="checkbox"/> Single rate for myself <input type="checkbox"/> Couple rate for myself and partner OR <input type="checkbox"/> Family rate for myself and dependant(s)
The length of OSHC will be calculated and advised, depending on your proposed enrolment period.	
If you have a current OSHC, please quote your OSHC policy number:	Expiry date: / /

15. Students with a disability/ health condition

Do you have a learning difficulty or health condition that may impact on the way you study, attend class or sit assessment? <input type="checkbox"/> Yes <input type="checkbox"/> No
--

Telling us about a disability will not prejudice your application. The earlier you tell us, the better we are able to work with UNSW and others to assist you to make adjustments to your teaching and assessment program. If you choose not to tell us, we may not be able to make adjustments in time and this could affect your ability to progress in your UNSW Global program and/or your preferred program at UNSW.

If you disclose a disability to us, please indicate that you consent to our use of this information only for the purposes above by ticking this box

16. Declaration

I certify that the information on the form is correct and complete in every detail, and I understand that inaccuracies or omissions may result in non-acceptance or cancellation of enrolment at any time. I have read and understood the Conditions of Enrolment and acknowledge that personal information provided is covered under the Privacy Policy.

Signature of Student (as it appears in your passport)	Date (dd/mm/yyyy): / /
---	------------------------

(Unsigned applications cannot be processed. Please sign your name on the signature box. A typed-in name cannot be accepted.

Education Representatives cannot sign on behalf of the student.) If applicant is under 18 years of age the signature of a Parent or Legal Guardian is required.

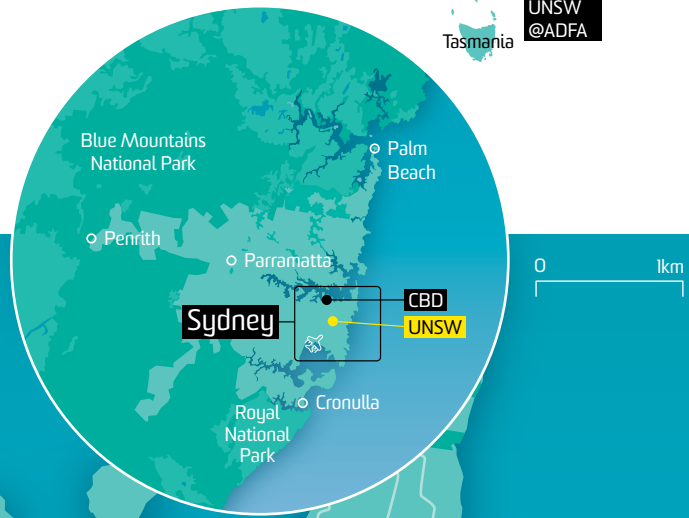
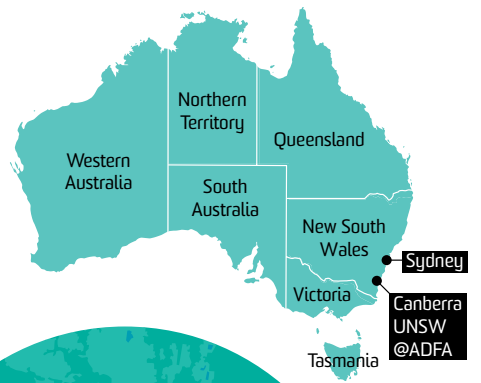
Signature of Parent or Legal Guardian	Date (dd/mm/yyyy): / /	Email of Parent or Legal Guardian
---------------------------------------	------------------------	-----------------------------------

Correspondence:

Lodge the completed form with a UNSW Global Representative in your country, or email to admissions@unswglobal.unsw.edu.au

Office use only:	Enrolment fee waived <input type="checkbox"/> Yes <input type="checkbox"/> No
Signature:	Date: / /

GETTING TO KNOW YOUR WAY AROUND SYDNEY



Our Global locations and other Networks can be seen at unswglobal.unsw.edu.au/contact



To ensure a quick response to your enquiry, please contact our following services:

All enquiries
enquiries@unswglobal.unsw.edu.au

Agents only
agent@unswglobal.unsw.edu.au
+61 2 9385 0555

Diploma Programs
Foundation Studies Programs
English Language Courses
unswglobal.unsw.edu.au

Join us on social media for all the latest news and updates:



UNSWGlobal



unswglobal



youtube.com/UNSWGlobal

